



Petty France, SW1H

£425,000

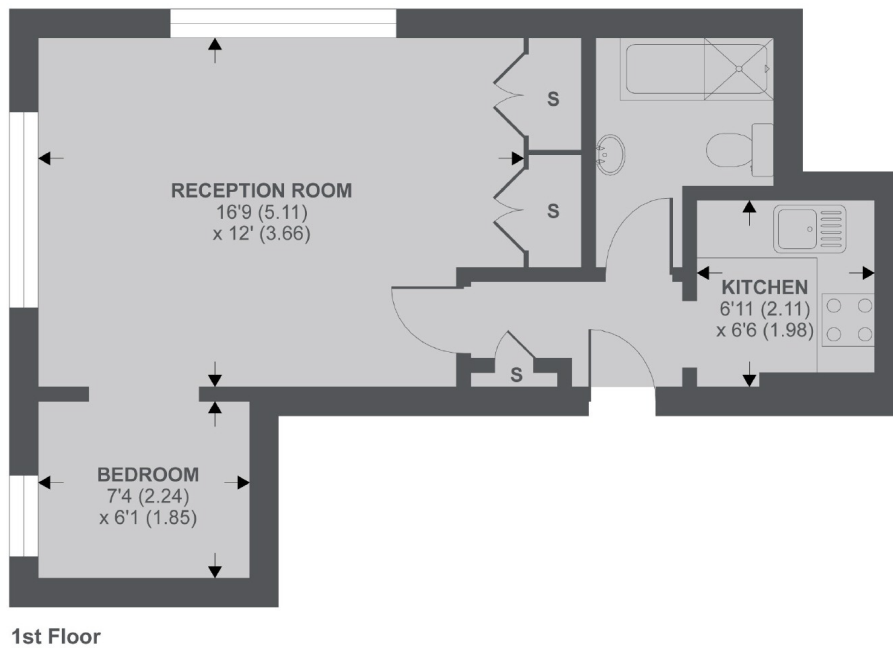
A well-presented studio flat with a separate sleeping area and the benefit of double glazing throughout. Situated in a portered block this apartment would make an ideal rental investment or pied-à-terre.

An excellent location with St James's Park tube station almost on the doorstep. Victoria train and bus terminals just a few minutes away and a variety of shops and restaurants nearby.

Features

- Separate Sleeping Area
- Porter
- Communal Heating/
Hotwater
- First Floor
- Close to St James's Park
- Share of Freehold

Petty France, London, SW1H



APPROX FLOOR AREA 381 SQ.FT 35.4 SQ.M

Copyright nichecom.co.uk 2019 REF : 513123

Contact

To arrange a viewing call our office on the number below or visit our website.



Energy Rating: C. We aim to make our particulars both accurate and reliable. However they are not guaranteed; nor do they form part of an offer or contract. If you require clarification on any points then please contact us, especially if you're traveling some distance to view. Please note that appliances and heating systems have not been tested and therefore no warranties can be given as to their good working order.