

## Medway Street, SW1P

£650,000

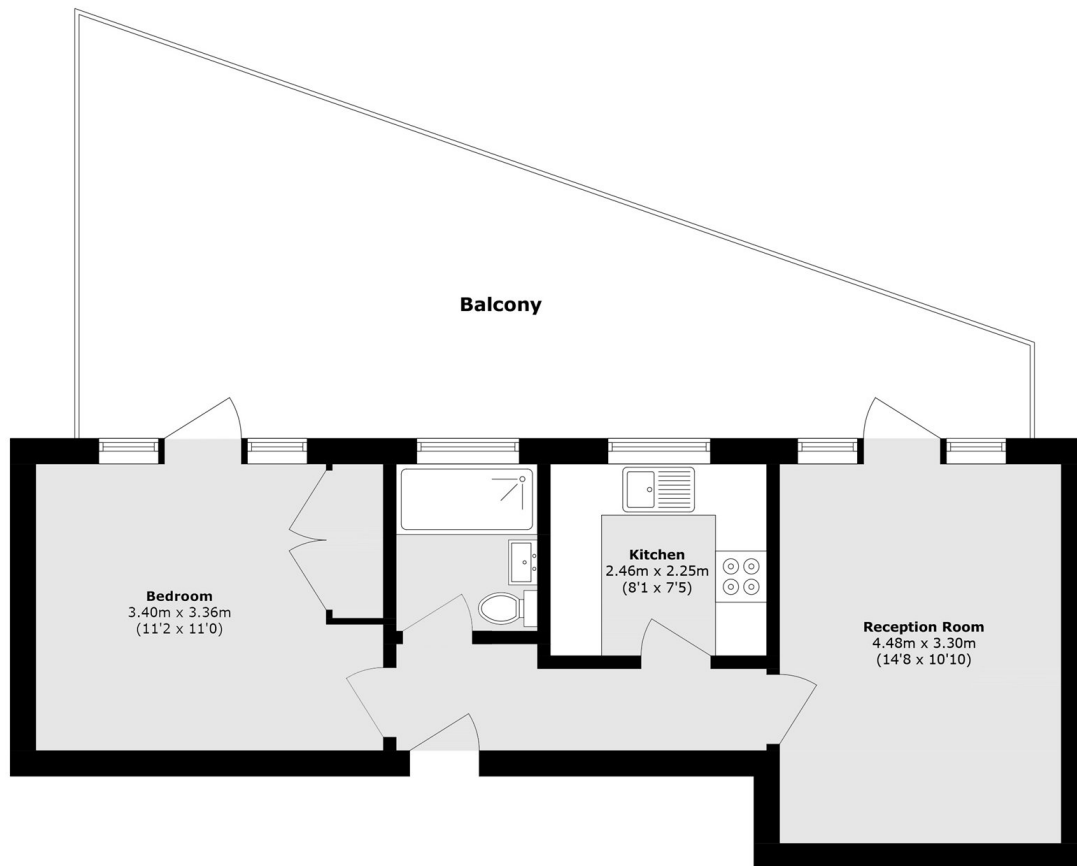
This well-presented one-bedroom apartment is located in the sought-after Ormond House on Medway Street. Maintained in good condition throughout, the property offers comfortable and practical living.

Situated in a convenient location, Ormond House provides easy access to local amenities, transport links, and nearby green spaces, making this property an excellent choice for professionals or couples seeking a well-located home.

### Features

- Underground Parking
- Private Balcony
- One bedroom
- Fourth Floor
- Concierge
- Lift

# Medway Street, London, SW1P



Total area (approx.): 43.9 sq. m (472.5 sq. ft)

Balcony area (approx.): 33.7 sq. m (362.7 sq. ft)