



**Tachbrook Street, SW1V**  
**£850,000**

**Dexters**



## Tachbrook Street, SW1V

Positioned on the top floor of a charming period building on Tachbrook Street, this two-bedroom duplex apartment offers an excellent opportunity to create a wonderful home in central London.

Arranged over two-levels, the lower floor provides a bright reception room with a fitted open plan kitchen and WC, whilst the upper levels you'll find two spacious bedrooms and bathroom. Further benefits include a large attic space, eaves storage and offered to market with no onward chain.

Tachbrook Street benefits from excellent transport connections, with Pimlico Tube Station (Victoria Line) approximately 100 metres away. Victoria Station (National Rail, Gatwick Express, Victoria, Circle and District Lines) is also within 0.6 Miles. The area offers a wide selection of local shops, cafés, restaurants, and a daily market at the end of the street. The River Thames is also located just 0.3 Miles from the property. The open green spaces of St George's Square and Bessborough Gardens are nearby at approximately 0.2 Miles, while The Houses of Parliament, Sloane Square, Battersea Park and the Battersea Power Station development are approximately 1 mile away.

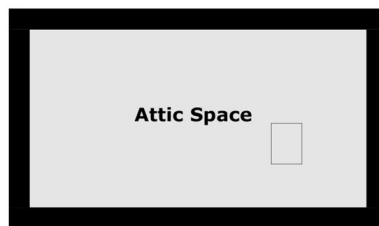
### Features

- Two Double Bedroom
- Excess Attic Storage
- Share Of Freehold
- Period Conversion
- Duplex Apartment
- No Onward Chain

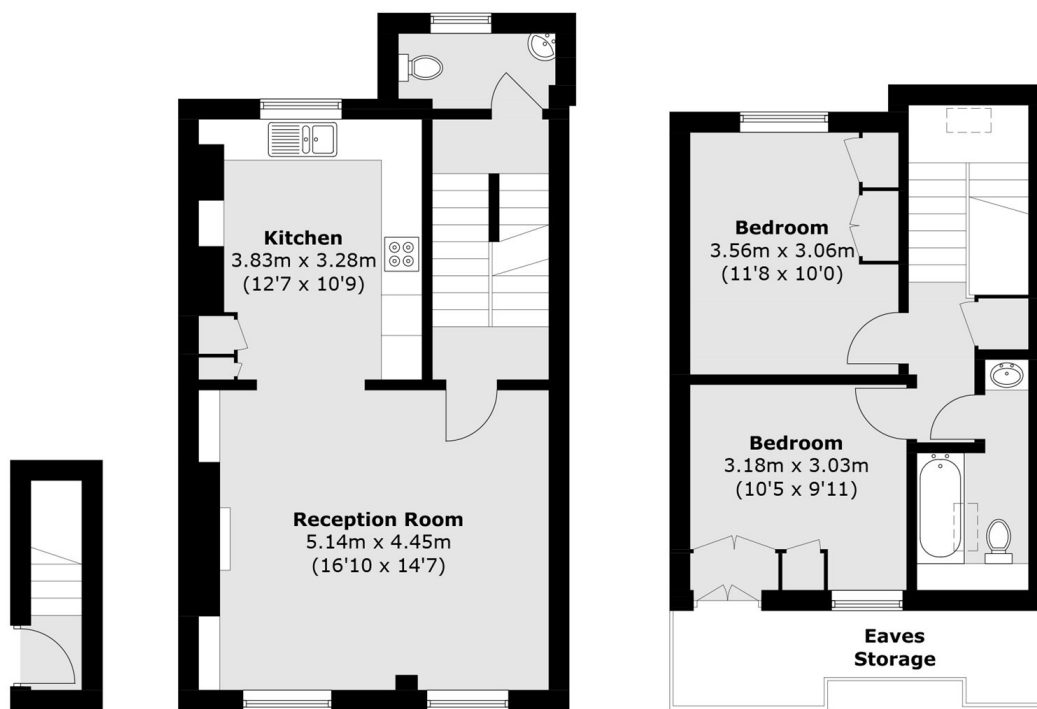




# Tachbrook Street, London, SW1V



**Attic Space**



**First Floor**

**Second Floor**

**Third Floor**

Total area (approx.): 82.7 sq. m (890.1 sq. ft)  
(Excluding Eaves / Attic Space)