



Gillingham Street, SW1V

£850,000

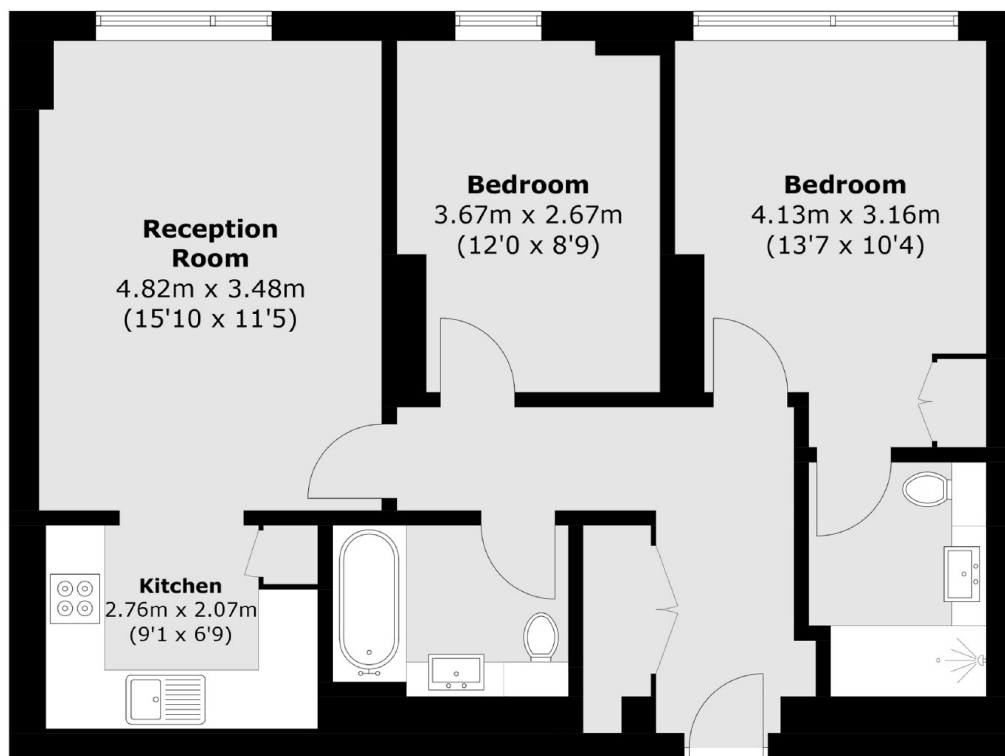
A well presented two-bedroom, two-bathroom apartment, ideally located just moments from Victoria Station. Set on the 7th floor, the property is in a good condition throughout and benefits from a lift, a porter service, and no onward chain. Residents are welcomed via a smart entrance lobby with a concierge desk and two lifts providing easy access to the apartment.

Gillingham Street is set in the heart of Pimlico, surrounded by an excellent selection of local shops, bars, and restaurants. Victoria Station is not far away, offering the Gatwick Express, National Rail, and the District, Circle, and Victoria Underground lines for superb connections across London and beyond.

Features

- Two Double Bedrooms
- No Onward Chain
- Central Location
- Two Bathrooms
- Air Conditioning
- 7th Floor

Gillingham Street, London, SW1V



Total area (approx.): 67.4 sq. m (725.5 sq. ft)