



Churchill Gardens, SW1V

£325,000

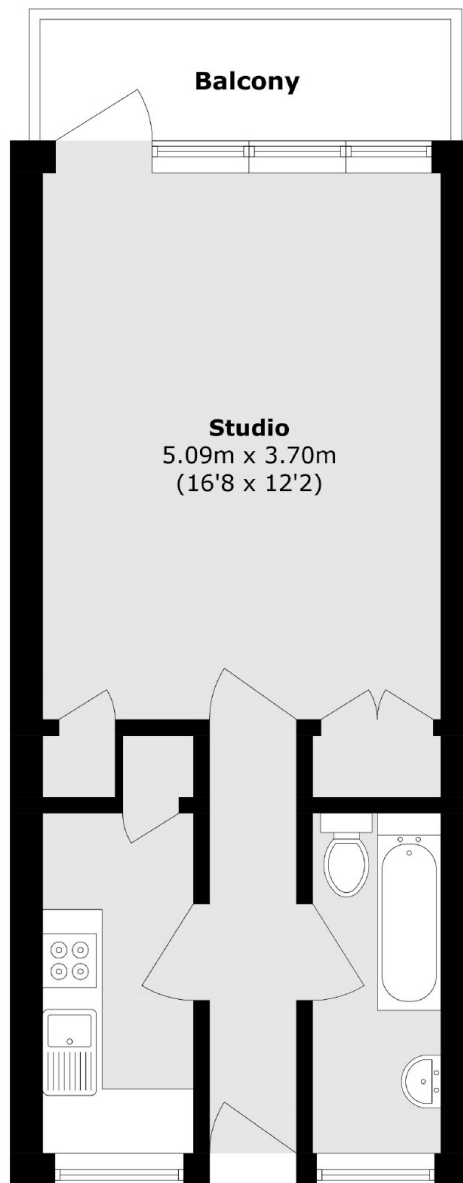
A spacious and bright studio apartment situated in a purpose built block in Pimlico. This property benefits from a separate kitchen, private balcony and built in storage.

Churchill Gardens is a quiet leafy estate set just moments from the local amenities of Pimlico, while for a more extensive collection both Chelsea and Victoria are close by.

Features

- Close To Transport Links
- No Onward Chain
- Separate Kitchen
- Private Balcony
- Built In Storage
- Natural Light

Churchill Gardens, London, SW1V



Total area (approx.): 33.7 sq. m (362.7 sq. ft)

Balcony area (approx.): 4.3 sq. m (46.2 sq. ft)

Dexters

Westminster
50 Churton Street
London
SW1V 2LP
Sales
020 7590 9570

Energy Rating: D. We aim to make our particulars both accurate and reliable. However they are not guaranteed; nor do they form part of an offer or contract. If you require clarification on any points then please contact us, especially if you're traveling some distance to view. Please note that appliances and heating systems have not been tested and therefore no warranties can be given as to their good working order.

 **RICS** | Regulated
Estate Agent
and Letting Agent

[dexters.co.uk](https://www.dexters.co.uk)