



Churchill Gardens, SW1V

£585,000

A well presented three bedroom duplex flat. The property benefits from generous bedrooms on the upper floors and a spacious reception room with a private balcony on the lower floor. The property is within easy reach of Pimlico Underground station.

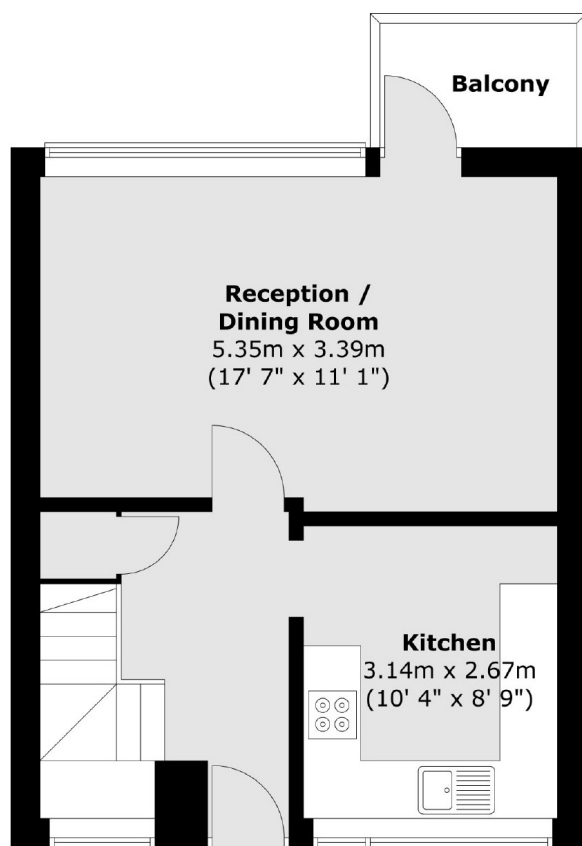
Hallam House is located conveniently in the centre of Pimlico, very close to the local shops on Lupus Street. Both Pimlico and Victoria Stations are within easy walking distance.

Features

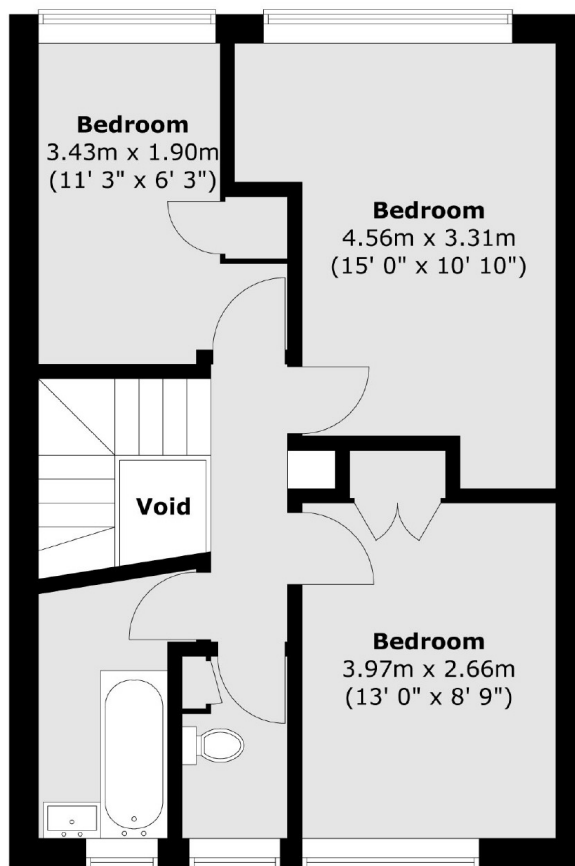
- Split Level
- No Onward Chain
- Private Balcony
- Excellent Location
- Spacious Reception Room
- Three Bedrooms

Churchill Gardens, London, SW1V

Second Floor



Third Floor



Total area (approx.) : 80.4 sq. m (865 sq. ft)
Total balcony area (approx.) : 2.7 sq. m (29 sq. ft)