



## Churchill Gardens, SW1V

£570,000

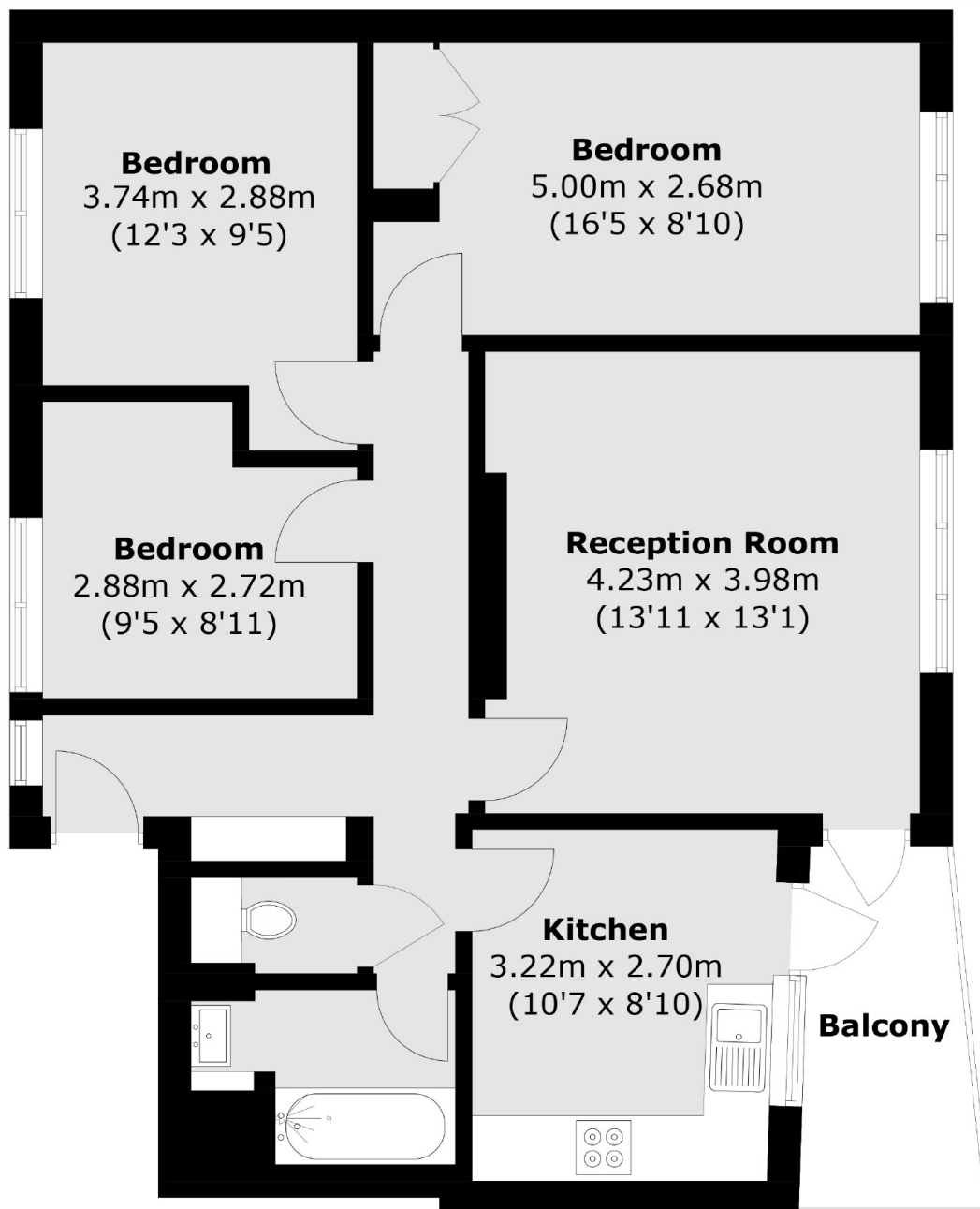
A three-bedroom apartment with no chain, featuring a spacious reception room, separate kitchen and private balcony with plenty of natural light throughout.

Chaucer House is ideally located close to the River Thames and is within walking distance of the amenities of Pimlico and Westminster. Transport links are close by at either Pimlico or Victoria.

### Features

- Three Bedrooms
- 172 Year Lease
- Second Floor
- No chain
- Balcony
- Lift

# Churchill Gardens, London, SW1V



Total area (approx.): 74.6 sq. m (803.0 sq. ft)  
Balcony: 4.9 sq. m (52.7 sq. ft)

## Dexters

Westminster  
50 Churton Street  
London  
SW1V 2LP  
Sales  
020 7590 9570

Energy Rating: C. We aim to make our particulars both accurate and reliable. However they are not guaranteed; nor do they form part of an offer or contract. If you require clarification on any points then please contact us, especially if you're traveling some distance to view. Please note that appliances and heating systems have not been tested and therefore no warranties can be given as to their good working order.

 **RICS** | Regulated  
Estate Agent  
and Letting Agent

[dexters.co.uk](https://www.dexters.co.uk)