



## Charlwood Street, SW1V

### £475,000

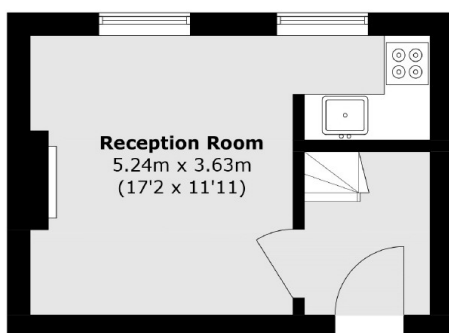
A split-level one-bedroom apartment arranged over the first and second floors, offering duplex-style living and sold with no onward chain. The property benefits from a long lease with approximately 165 years remaining

Situated at the southernmost end of Charlwood Street within the Pimlico Grid, this location offers easy access to the River Thames and is surrounded by a vibrant selection of independent shops, restaurants, and cafés just moments away

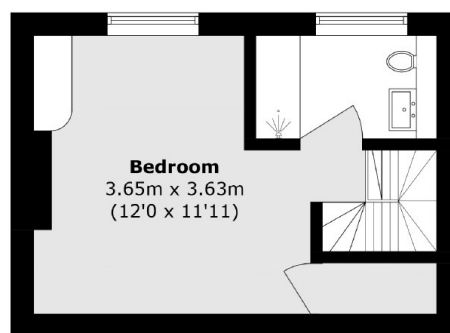
### Features

- Close To Transport Links
- Stucco Fronted Property
- First & Second Floor
- No Onward Chain
- Period Features
- High Ceilings

# Charlwood Street, London, SW1V



**First Floor**



**Second Floor**

Total area (approx.): 38.4 sq. m (413.3 sq. ft)