



Petty France, SW1H

£400,000

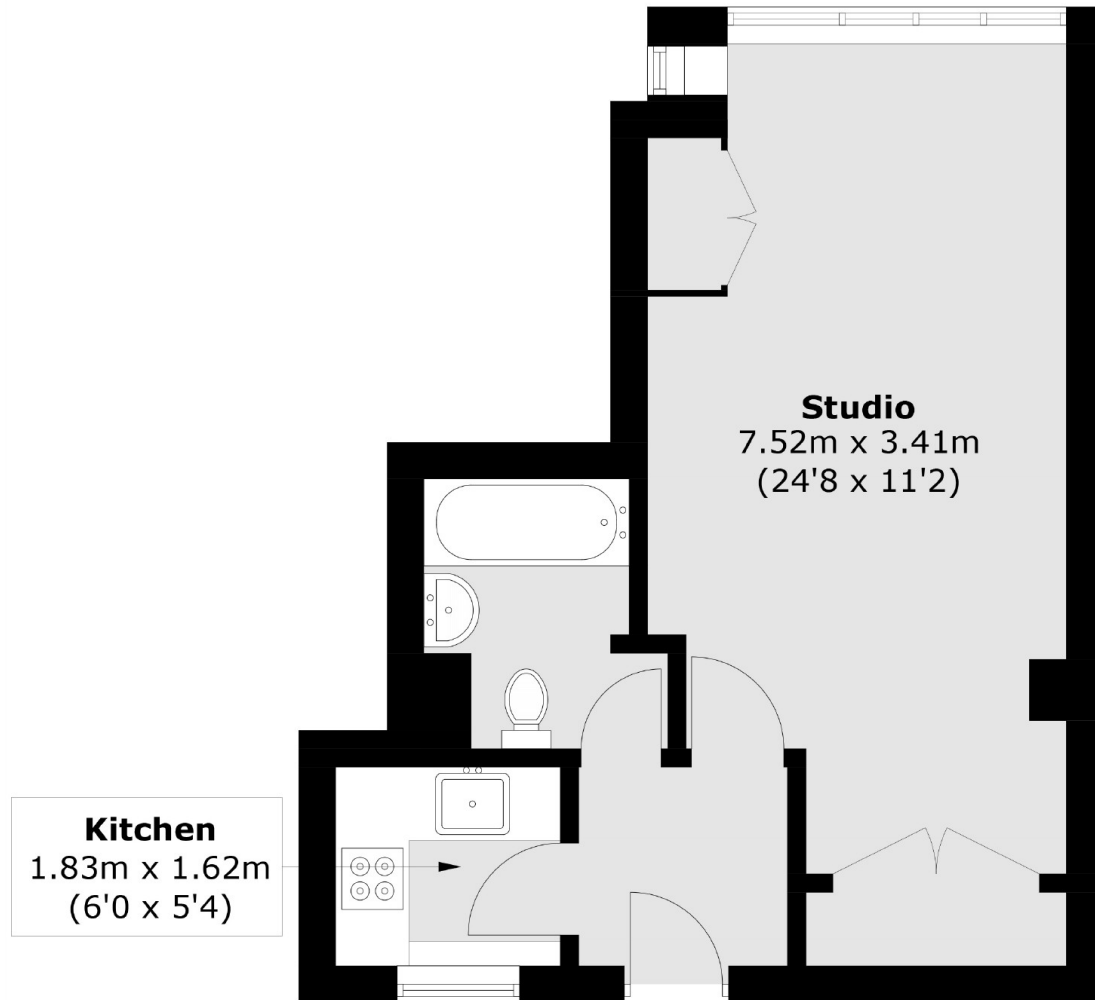
A spacious studio apartment situated within a much sought after purpose built 1930s block. This property benefits from a share of freehold, a live in porter and no chain.

An excellent location with St James's Park tube station almost on the doorstep. Victoria train and bus terminals just a few minutes away and a variety of shops and restaurants nearby.

Features

- Communal Heating/ Hot Water
- Close to St James Park
- Share Of Freehold
- Ground Floor
- No Chain
- Porter

Petty France, London, SW1H



Ground Floor

Total area (approx.): 33.9 sq. m (364.9 sq. ft)

Dexters

Westminster
50 Churton Street
London
SW1V 2LP
Sales
020 7590 9570

Energy Rating: C. We aim to make our particulars both accurate and reliable. However they are not guaranteed; nor do they form part of an offer or contract. If you require clarification on any points then please contact us, especially if you're traveling some distance to view. Please note that appliances and heating systems have not been tested and therefore no warranties can be given as to their good working order.

 **RICS** | Regulated
Estate Agent
and Letting Agent

[dexters.co.uk](https://www.dexters.co.uk)