



## St. Matthew Street, SW1P

### £875,000

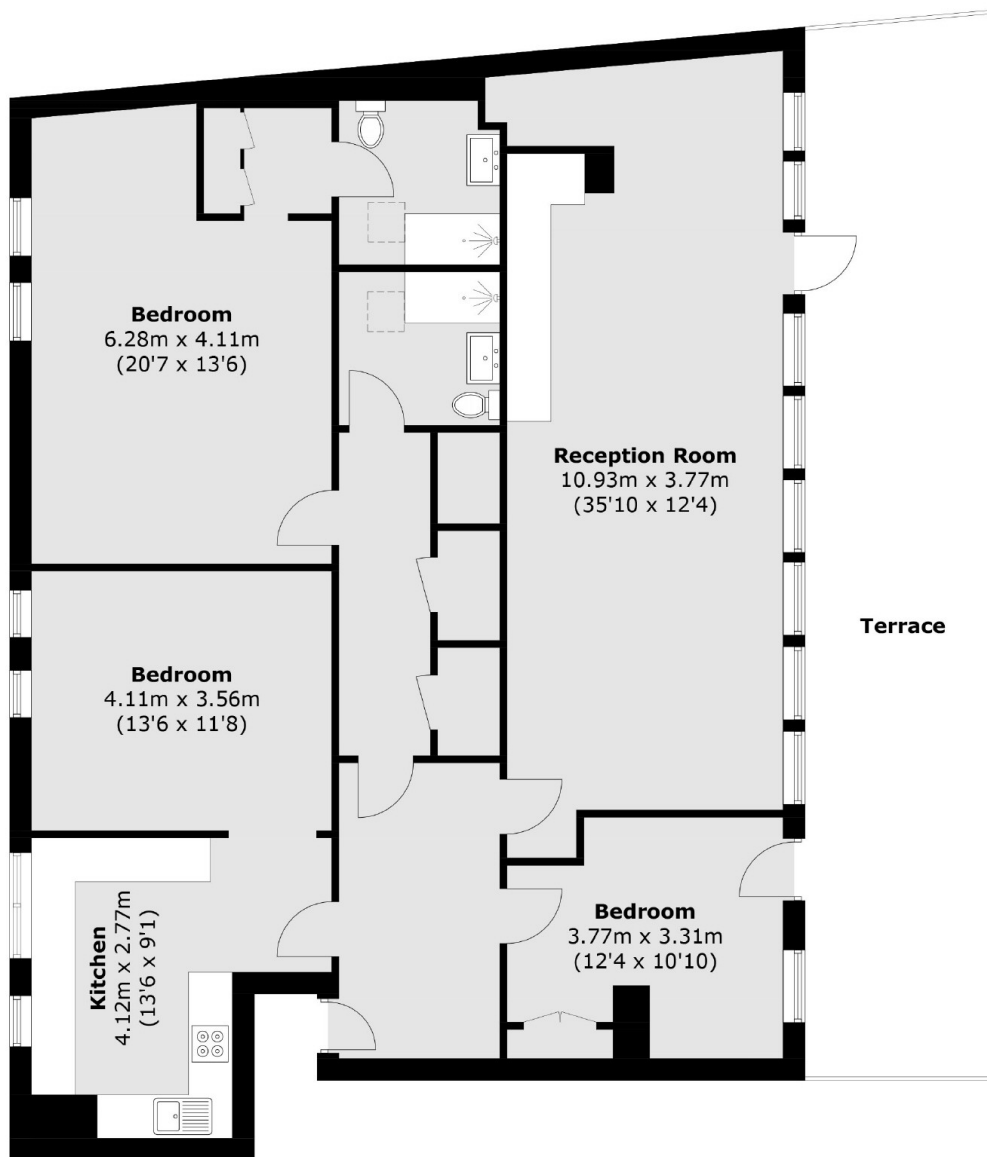
A superb three bed, two bathroom lateral flat situated on the third floor (with lift) in a purpose built block. This property benefits from a spacious private terrace and no onward chain.

Transport links are excellent with St James's Park tube and Victoria tube, mainline station and bus terminal close by together with an abundance of shops and restaurants in nearby Victoria Street.

### Features

- Close To Transport Links
- Convenient Location
- Private Terrace
- No Chain
- Top Floor
- Lift

# St. Matthew Street, London, SW1P



## Third Floor

Total area (approx.): 138.4 sq. m (1489.4 sq. ft)  
Terrace : 37.7 sq. m (405.8 sq. ft)