



Westminster Palace Gardens, £1,600,000

Located on the third floor, this modern four-bedroom apartment is set within a prestigious Victorian mansion block just off Victoria Street. The building boasts a striking Grade II listed facade and benefits from a daytime porter for added convenience.

Ideally positioned between Victoria Station and the iconic Houses of Parliament, this exceptional location offers seamless connectivity. St. James's Park Tube Station is just a short walk away, while the vibrant Victoria Street is moments from your doorstep, boasting an array of stylish shops, acclaimed restaurants, and lively cafés.

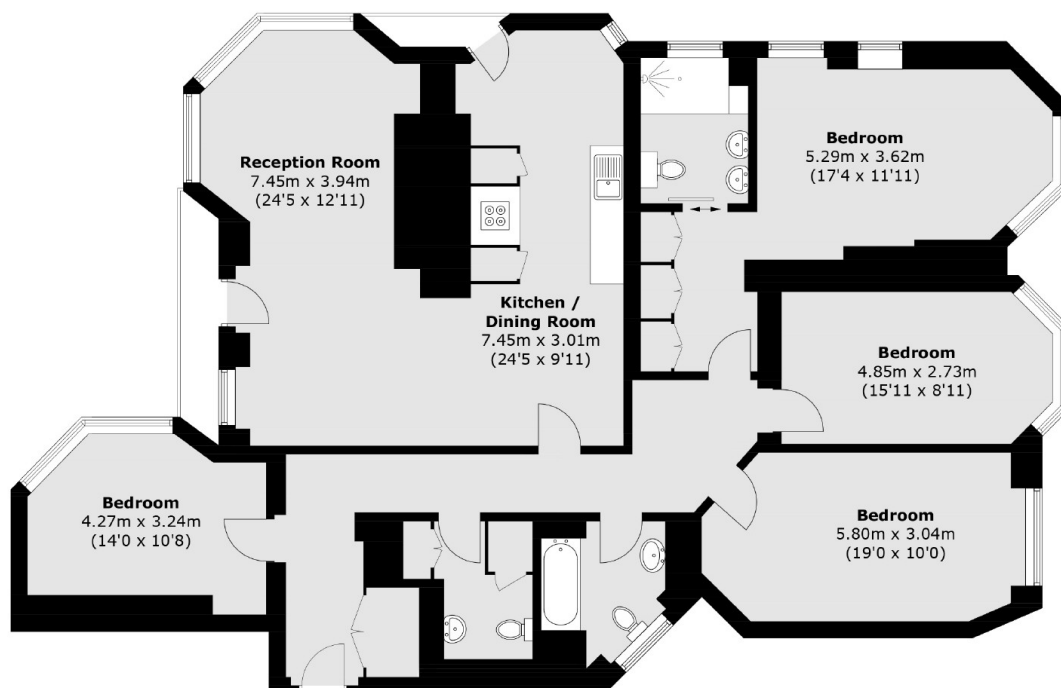
Features

Four Double Bedrooms

Situated on the Third Floor

Lift Access

Westminster Palace Gardens, London, SW1P



Third Floor

Total area (approx.): 159.9 sq. m (1,721.2 sq. ft)
External area (approx.): 3.8 sq. m (40.9 sq. ft)