



Claverton Street, SW1V

£575,000

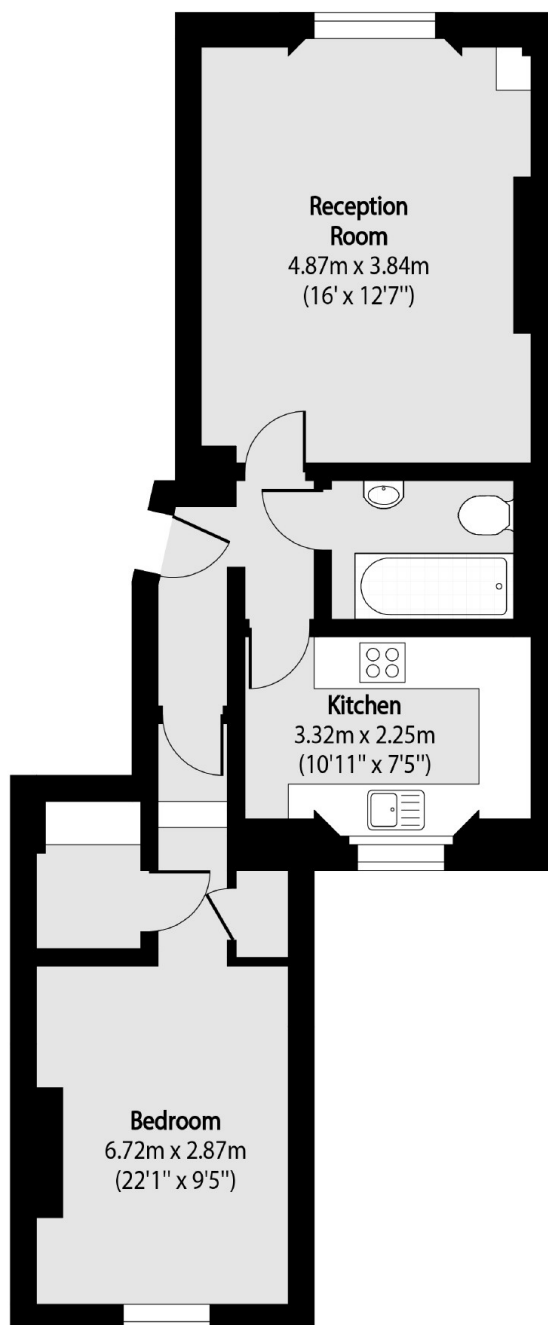
A spacious one-bedroom, raised ground floor apartment is offered to the market in a chain free position in Pimlico. This property benefits from high ceilings, ample amounts of natural light and a share of freehold.

Claverton Street has an ideal central London location moments from the River Thames, with the gardens of St George's Square and Dolphin Square gym/spa a short walk away and the amenities of Pimlico, Victoria and Chelsea's Sloane Square all close by. The new development at Battersea Power Station and Battersea Park are also close by. The apartment is conveniently located for the London Underground transport links at both Pimlico (Victoria Line) and Victoria Station (Circle, District and Victoria Lines), which also offers National Rail services.

Features

- Close To Transport Links
- Stucco Fronted Building
- Raised Ground Floor
- Share Of Freehold
- Period Conversion
- No Onward Chain

Claverton Street, London, SW1V



Raised Ground Floor

Total area (approx): 52.43 sq m (564 sq. ft)