

Westminster Palace Gardens, £1,575,000

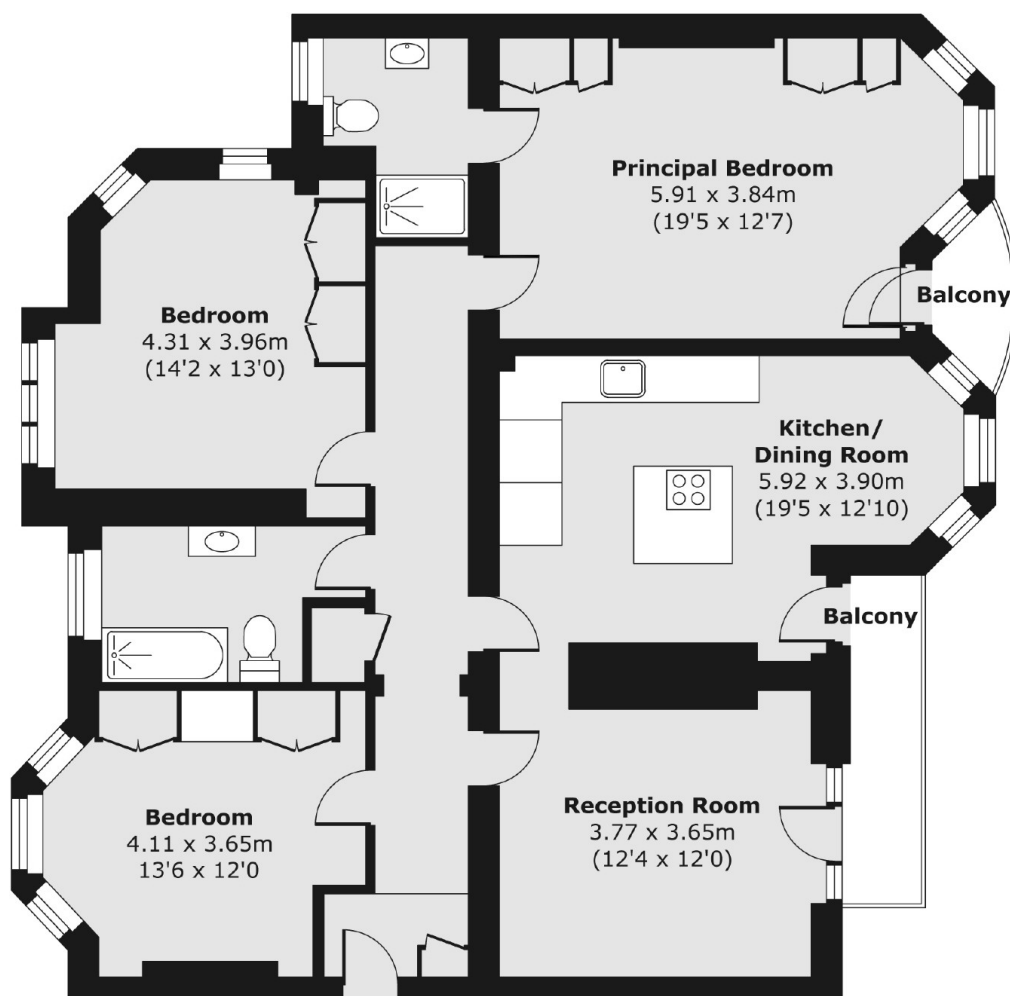
A beautifully presented, three bedroom contemporary apartment located within a prestigious Victorian mansion block just off Victoria Street. The apartment features ample amounts of natural day light, high ceilings and bespoke finishes throughout. Further benefits such as a porter, share of freehold and a lift.

Ideally positioned between Victoria Station and the iconic Houses of Parliament, this exceptional location offers seamless connectivity. St. James's Park Tube Station is just a short walk away, while the vibrant Victoria Street is moments from your doorstep, boasting an array of stylish shops, acclaimed restaurants, and lively cafés.

Features

- Three Double Bedrooms
- Grade II Listed Facade
- Share Of Freehold
- Day Time Porter
- Balcony
- Lift

Westminster Palace Gardens, London, SW1P



Total area (approx.) 116.65 sq. m (1,256 sq. ft)

Balcony area (approx.) 5.81 sq. m (63 sq. ft)