



Dean Ryle Street, SW1P

£1,575,000

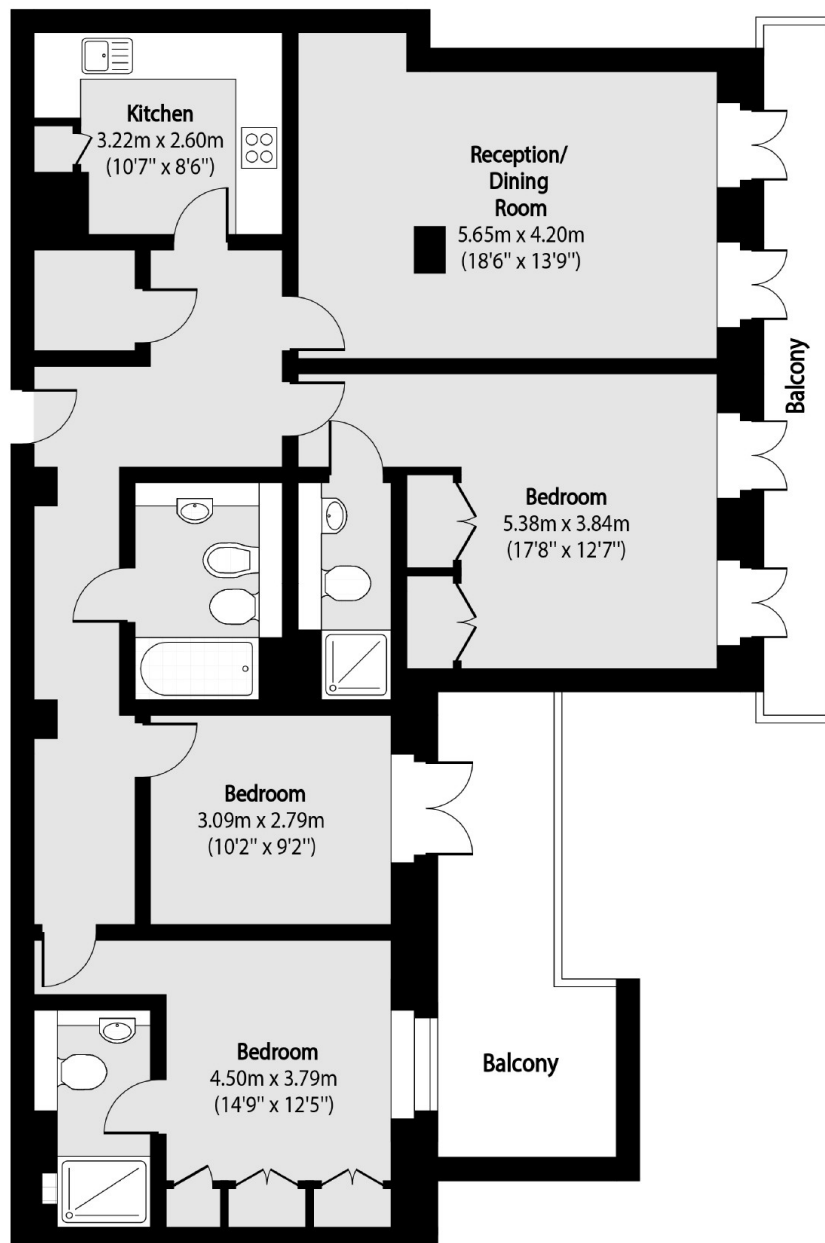
A beautifully presented three bedroom, three bathroom apartment located on the 8th floor (with lift) of this prestigious block. This property benefits from private outside space, 24 hour concierge and ample amounts of natural daylight throughout the apartment.

Dean Ryle Street is located a few minutes from St John's Garden Square and Smith Square. Transport links are excellent with Westminster, St James's Park, Pimlico and Victoria transport hub nearby.

Features

- Meeting Rooms/ Business Suite
- Secure Underground Parking
- 24 Hour Concierge Service
- Close To Transport Links
- Three Bedrooms
- Private Balcony

Dean Ryle Street, London, SW1P



Eighth Floor

Total area (approx): 102.83 sq m (1107 sq. ft)

Balcony total area (approx): 17.88 sq m (192 sq. ft)

Dexters

Westminster
50 Churton Street
London
SW1V 2LP
Sales
020 7590 9570

Energy Rating: C. We aim to make our particulars both accurate and reliable. However they are not guaranteed; nor do they form part of an offer or contract. If you require clarification on any points then please contact us, especially if you're traveling some distance to view. Please note that appliances and heating systems have not been tested and therefore no warranties can be given as to their good working order.

 **RICS** | Regulated
Estate Agent
and Letting Agent

[dexters.co.uk](https://www.dexters.co.uk)