



## Victoria Street, SW1H

£795,000

A spacious one bedroom apartment located on the 8th floor (with lift) of a prestigious Victorian mansion block. Offered to the market with no onward chain, ample amounts of natural light and a private balcony over looking the iconic landmarks of London.

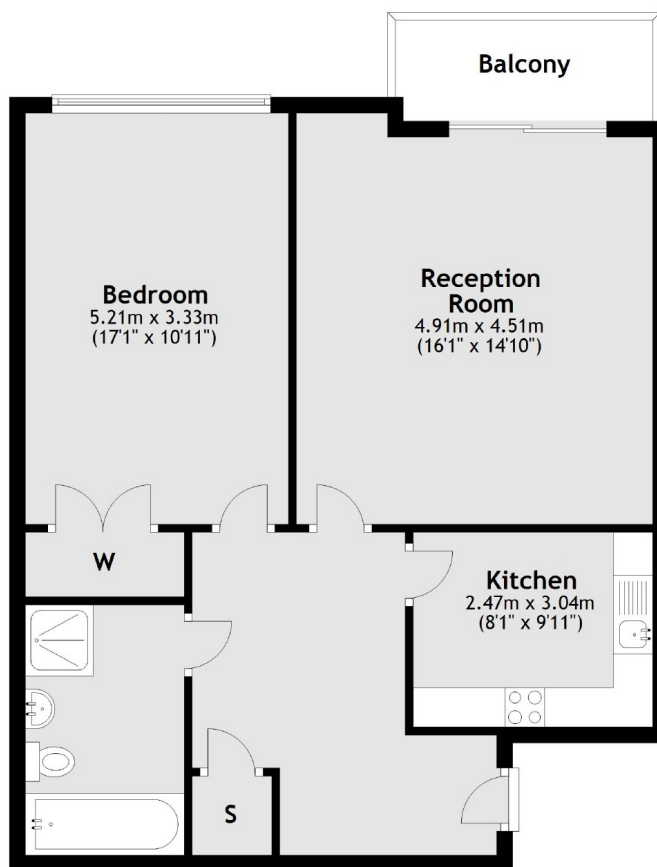
Ideally positioned between Victoria Station and the iconic Houses of Parliament, this exceptional location offers seamless connectivity. St. James's Park Tube Station is just a short walk away, while the vibrant Victoria Street is moments from your doorstep, boasting an array of stylish shops, acclaimed restaurants, and lively cafés.

### Features

- Close To Transport Links
- 24 Hour Concierge
- Iconic Views
- Long Lease
- Balcony
- Parking

# Victoria Street, London, SW1H

## Eighth Floor



Total area: approx. 70.6 sq. metres (759.5 sq. feet)

# Dexters

Westminster  
50 Churton Street  
London  
SW1V 2LP  
Sales  
020 7590 9570

Energy Rating: B. We aim to make our particulars both accurate and reliable. However they are not guaranteed; nor do they form part of an offer or contract. If you require clarification on any points then please contact us, especially if you're traveling some distance to view. Please note that appliances and heating systems have not been tested and therefore no warranties can be given as to their good working order.

 **RICS** | Regulated  
Estate Agent  
and Letting Agent

[dexters.co.uk](https://www.dexters.co.uk)