



## Palace Street, SW1E

### £1,100,000

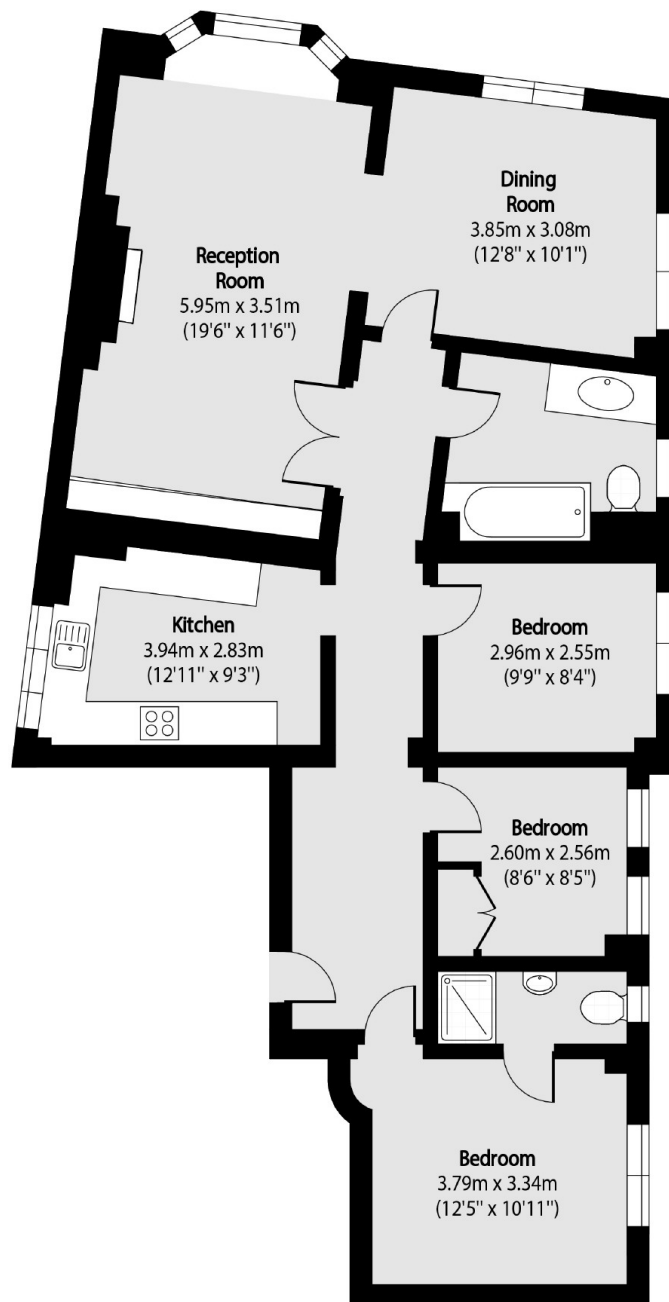
A delightful three-bedroom, two-bathroom lateral flat situated on the second floor of a well-maintained building with lift access. Boasting natural light, this residence offers views of the rear facade of Buckingham Palace and the added convenience of a dedicated resident caretaker.

Ideally situated on Palace Street, just moments from Buckingham Palace and the bustling shops and restaurants of Victoria Street, this prime location offers unparalleled convenience. A short stroll leads to iconic landmarks such as the Houses of Parliament and the tranquil green spaces of St. James's Park, providing the perfect blend of city vibrancy and peaceful retreat.

### Features

- Excellent Transport Links
- Dedicated Resident Caretaker
- Three Spacious Bedrooms
- Second-Floor Location
- Stunning Iconic Views
- Convenient Lift Access

# Palace Street, London, SW1E



Total area (approx): 100.92 sq m (1086 sq. ft)

## Dexters

Westminster  
50 Churton Street  
London  
SW1V 2LP  
Sales  
020 7590 9570

Energy Rating: C. We aim to make our particulars both accurate and reliable. However they are not guaranteed; nor do they form part of an offer or contract. If you require clarification on any points then please contact us, especially if you're traveling some distance to view. Please note that appliances and heating systems have not been tested and therefore no warranties can be given as to their good working order.

 **RICS** | Regulated  
Estate Agent  
and Letting Agent

[dexters.co.uk](https://www.dexters.co.uk)