



Warwick Way, SW1V

£1,900,000

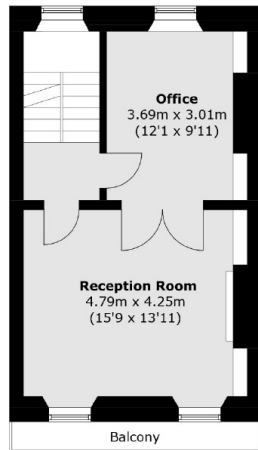
Nestled within the highly sought-after Pimlico Grid, this elegant four-bedroom terraced house presents a rare opportunity to craft a dream family home. Spanning four spacious floors, with potential for a rear and fifth-floor extension (STPP), the property combines generous living areas with timeless period charm.

Warwick Way is in the heart of Pimlico where there are a variety of fashionable restaurants, charming cafés and local shops. Transport links are excellent, Victoria underground and mainline stations are moments away and offer direct links to Gatwick Airport as well as trains to the south and the south east of England.

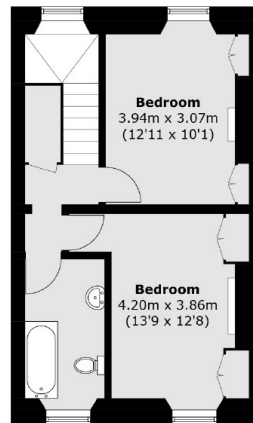
Features

- Potential To Extend (STPP)
- Close to Local Amenities
- Four Double Bedrooms
- Courtyard Garden
- Two Vaults
- Freehold

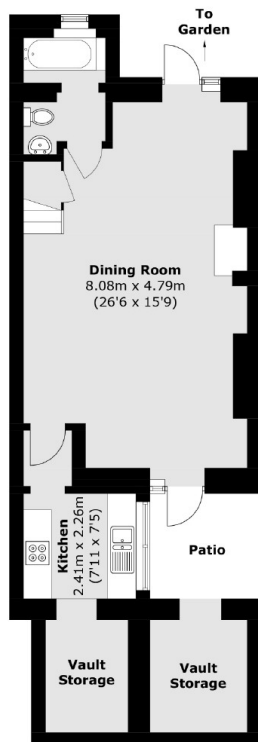
Warwick Way, London, SW1V



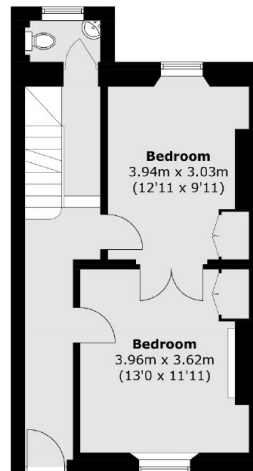
First Floor



Second Floor



Lower Ground Floor



Ground Floor

Total area (approx.): 169.5 sq. m (1,824.3 sq. ft)
(Including Internal Vault Storage)
External Vault Storage: 5.0 sq. m (53.8 sq. ft)
Balcony area (approx.): 3.2 sq. m (34.4 sq. ft)