



Carlisle Place, SW1P

£1,300,000

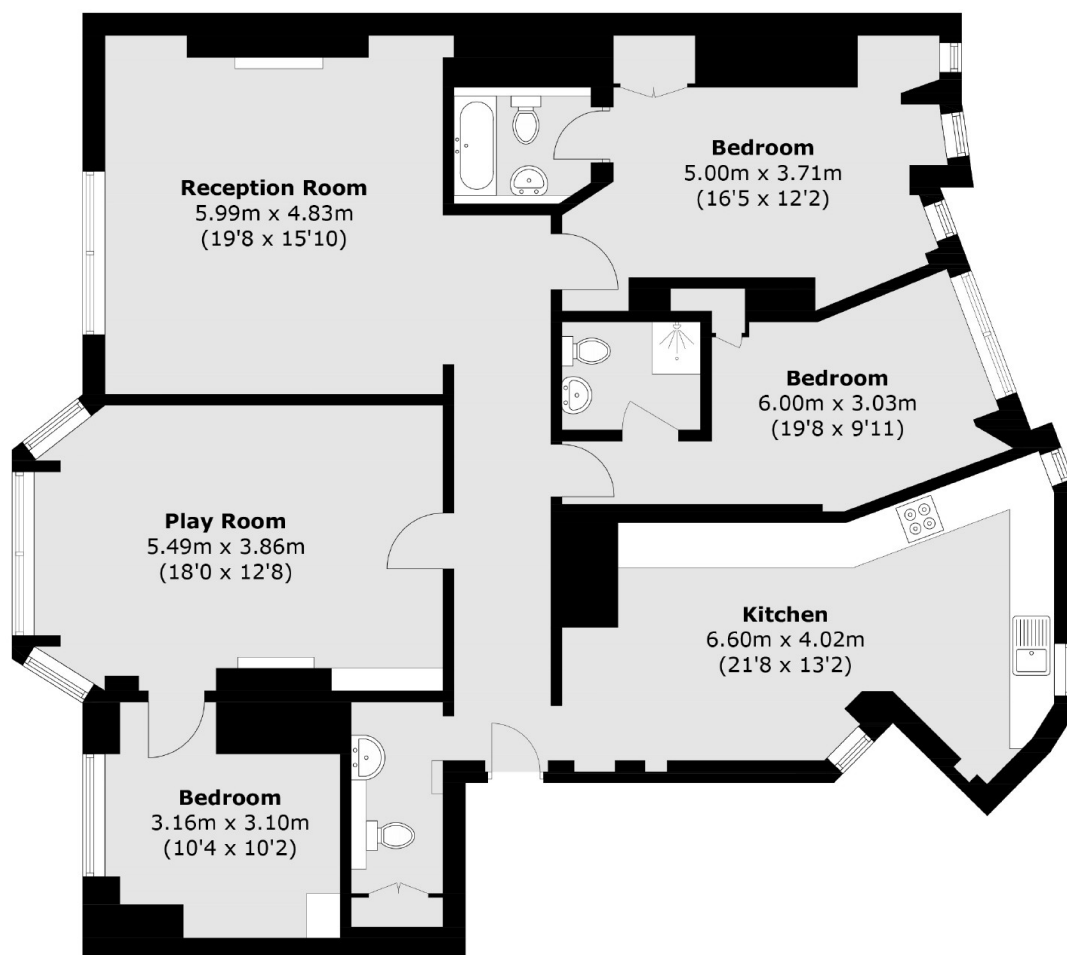
Set within a grand Victorian mansion block that has recently undergone external renovations, this beautifully refurbished apartment is available for the first time in nearly 25 years. Spanning almost 1,400 sqft, it offers high ceilings, period charm and a well-proportioned layout.

Carlisle Place (SW1P) is a prestigious address in the Westminster Cathedral Conservation Area, moments from Victoria Station, offering Overground, Underground and National Rail services, including the Gatwick Express. Iconic landmarks such as Buckingham Palace, the Houses of Parliament, and St James' Park are within easy reach, with Chelsea, Belgravia and Knightsbridge also nearby.

Features

- High Ceilings & Period Features
- Excellent Transport Links
- Prime Central Location
- Share Of Freehold
- No Onward Chain
- Portered Block

Carlisle Place, London, SW1P



Total area (approx.): 129.2 sq. m (1390.7 sq. ft)

Dexters

Westminster
50 Churton Street
London
SW1V 2LP
Sales
020 7590 9570

Energy Rating: C. We aim to make our particulars both accurate and reliable. However they are not guaranteed; nor do they form part of an offer or contract. If you require clarification on any points then please contact us, especially if you're traveling some distance to view. Please note that appliances and heating systems have not been tested and therefore no warranties can be given as to their good working order.

 **RICS** | Regulated
Estate Agent
and Letting Agent

[dexters.co.uk](https://www.dexters.co.uk)