



Grosvenor Road, SW1V

£470,000

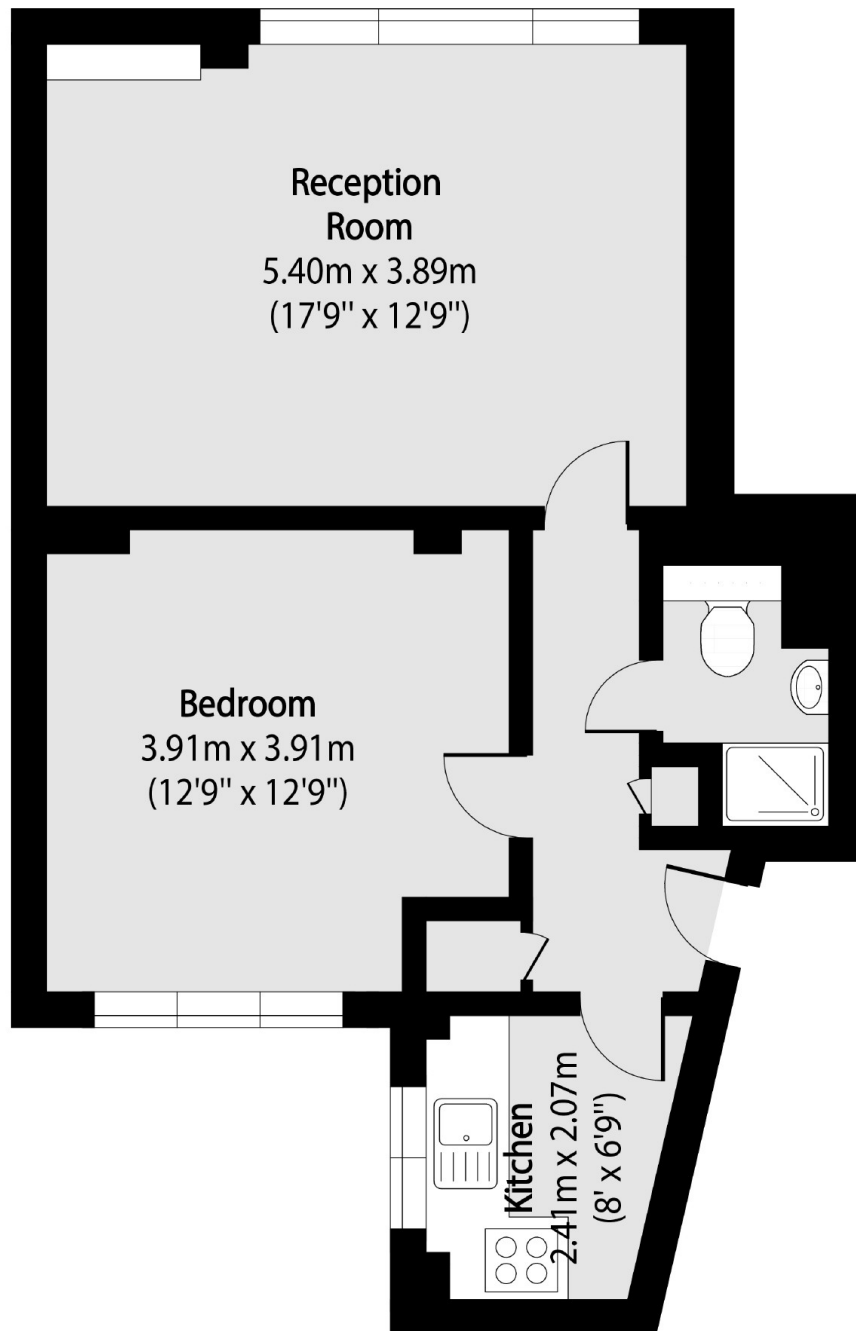
A charming one-bedroom apartment situated on the second floor of a purpose built block on Grosvenor road with views spreading across the River Thames and Battersea Power Station.

Located along the Thames, the apartment offers easy access to Pimlico Station, Victoria Station, and the amenities of Westminster & Pimlico. Ideal for professionals or couples seeking a well-connected and stylish home in a prime central London location.

Features

- One Double Bedroom
- Plenty of Natural Light
- Share of Freehold
- Second Floor (with lift)
- Storage Unit
- Hot water & heating included

Grosvenor Road, London, SW1V



Total area (approx): 51.00 sq m (548 sq. ft)