



Grosvenor Road, SW1V

£1,697,500

Set within a prestigious riverside development, this exquisitely refurbished two-bedroom apartment offers a rare opportunity to own a sophisticated home in the heart of London.

With outstanding transport links nearby Victoria and Vauxhall stations, as well as the Thames Clipper service commuting across London and beyond is effortless.

Features

- Two Bathrooms (One En-Suite)
- Two Double Bedrooms
- River Views
- Concierge
- Parking
- Gym

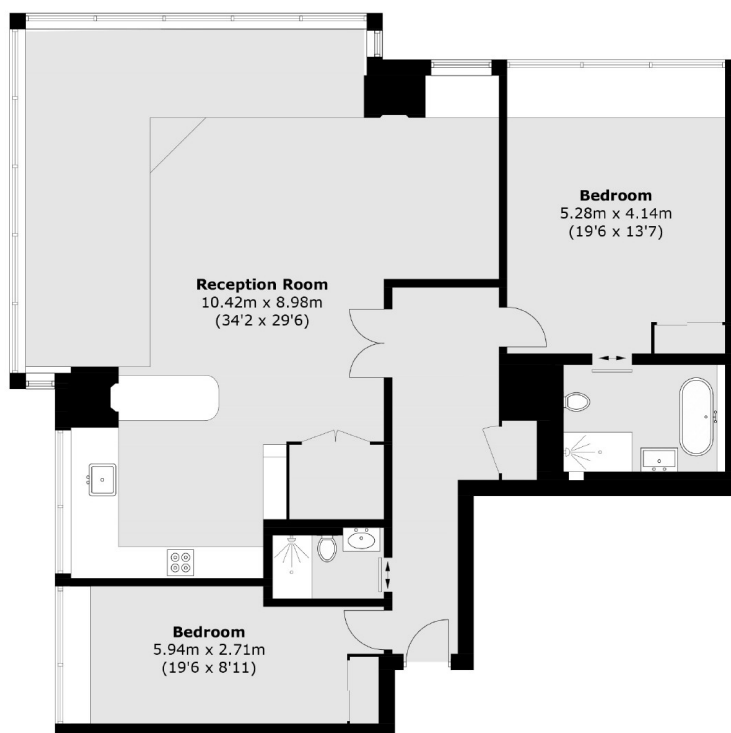


Grosvenor Road, SW1V

Residents of The Panoramic enjoy a host of premium amenities, including a dedicated concierge, secure parking, a private gym, and stunning river views. Offered with no onward chain and a lease extension option, this exceptional apartment presents a unique opportunity for discerning buyers seeking riverside living at its finest.



Grosvenor Road, London, SW1V



Ninth Floor

Total area (approx.): 137.3 sq. m (1,477.9 sq. ft)

Dexters

Westminster
50 Churton Street
London
SW1V 2LP
Sales
020 7590 9570

Energy Rating: C. We aim to make our particulars both accurate and reliable. However they are not guaranteed; nor do they form part of an offer or contract. If you require clarification on any points then please contact us, especially if you're traveling some distance to view. Please note that appliances and heating systems have not been tested and therefore no warranties can be given as to their good working order.

 **RICS** | Regulated
Estate Agent
and Letting Agent

[dexters.co.uk](https://www.dexters.co.uk)