



Morpeth Terrace, SW1P

£820,000

This recently refurbished two-bedroom apartment is located on one of Westminster's most prestigious tree-lined roads, set within a historic building just moments from Westminster Cathedral and Victoria Station.

Just minutes from Victoria Street, this sought-after location offers excellent transport links, with Victoria and St James's Park stations nearby, providing easy access across London, the southeast of England, and the Gatwick Express.

Features

- Highly Desirable Location
- High Quality Finish
- Share of Freehold
- Two Bathrooms
- Two Bedrooms
- No Chain

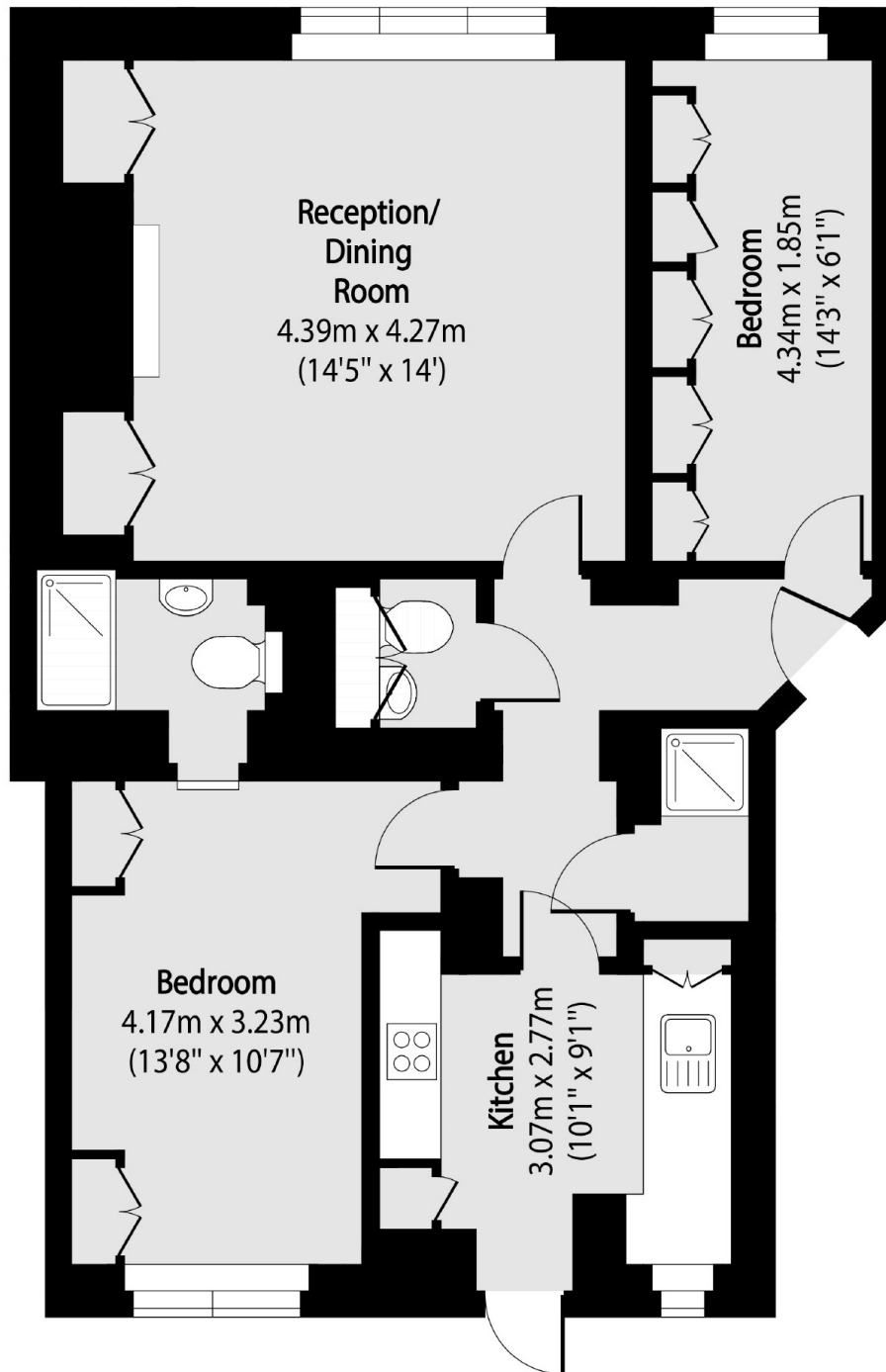


Morpeth Terrace, SW1P

The property features two bedrooms, two bathrooms (including one en-suite), and a fully fitted separate kitchen with direct access to the communal courtyard at the rear. Finished to a high standard throughout, this turnkey apartment is perfect for buyers seeking a seamless purchase with no onward chain.



Morpeth Terrace, London, SW1P



Total area (approx): 67.54 sq m (727 sq. ft)