



## Vincent Square, SW1P

### £3,450,000

An exquisite four-bedroom townhouse, perfectly positioned on the prestigious west side of one of Westminster's most distinguished squares. Spanning four beautifully appointed floors, this elegant home offers exceptional living and entertaining space, seamlessly blending period charm with modern comforts.

Ideally situated just south of Rochester Row, Vincent Square offers unparalleled convenience with a wealth of nearby shopping, dining, and transport options. Victoria, St. James's Park, and Pimlico stations are all within easy walking distance, ensuring effortless connectivity across London.

### Features

- Secure Allocated Parking
- Vincent Square Location
- Four Double Bedrooms
- Freehold Period House
- Westminster
- No Chain





## Vincent Square, SW1P

The property boasts a stunning double reception room, a formal dining room, and a well-designed kitchen/breakfast room, all complemented by a breathtaking south/west-facing garden.

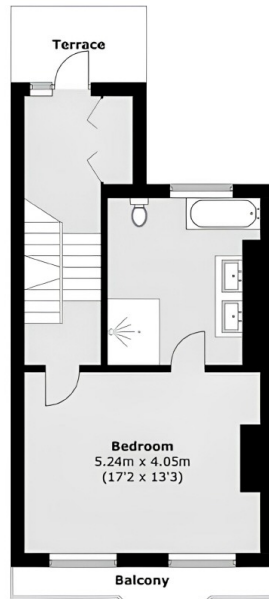
The luxurious master suite occupies the first floor, featuring a spacious en-suite bathroom. The top floor hosts two generously proportioned bedrooms and a stylish family bathroom, while a fourth bedroom currently used as a study is located within the rear addition on the raised ground floor, benefiting from access to a further cloakroom on the lower ground floor. Additional highlights include a south/west-facing roof terrace on the first floor.

Designed to an exceptional standard and meticulously maintained, this bright and inviting residence showcases an array of period features throughout. A rare advantage is the secure allocated parking at the rear of the property.

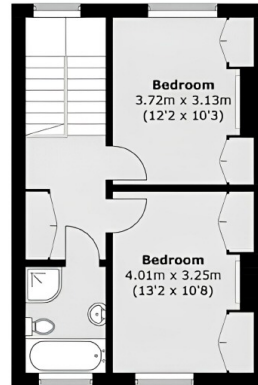




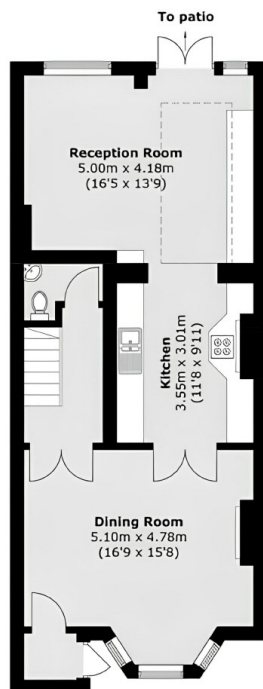
# Vincent Square, London, SW1P



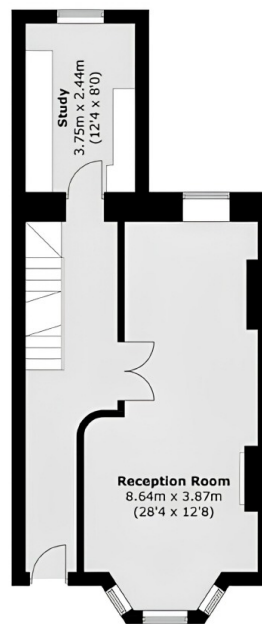
**First Floor**



**Second Floor**



**Lower Ground Floor**



**Raised Ground Floor**



**Site Plan**

Total area (approx.): 205.4 sq. m (2,211 sq. ft)  
Terrace & Balcony (approx.): 8.8 sq. m (94.7 sq. ft)