



Moreton Street, SW1V

£600,000

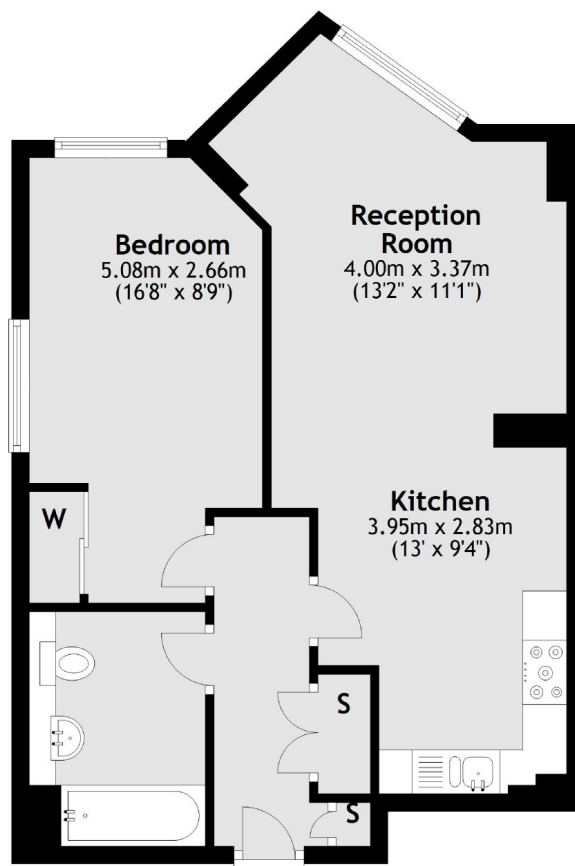
A spacious one bedroom apartment, located on the second floor of a purpose built block in Pimlico. This property offers an open plan reception room, modern fixtures and the addition of secure underground parking.

Westrovia Court is ideally located on Moreton Street and is within a few minutes walk of both Victoria and Pimlico Stations, there are an abundance of shops, bars and cafes in the local area.

Features

- Concierge 7 Days Per Week
- Close Transport Links
- No Onward Chain
- Secure Parking
- Second Floor
- Lift

Moreton Street,
London, SW1V



Second Floor

Total area: approx. 49.4 sq. metres (531.7 sq. feet)

Dexters

Westminster
50 Churton Street
London
SW1V 2LP
Sales
020 7590 9570

Energy Rating: B. We aim to make our particulars both accurate and reliable. However they are not guaranteed; nor do they form part of an offer or contract. If you require clarification on any points then please contact us, especially if you're traveling some distance to view. Please note that appliances and heating systems have not been tested and therefore no warranties can be given as to their good working order.

 **RICS** | Regulated
Estate Agent
and Letting Agent

[dexters.co.uk](https://www.dexters.co.uk)