



John Islip Street, SW1P

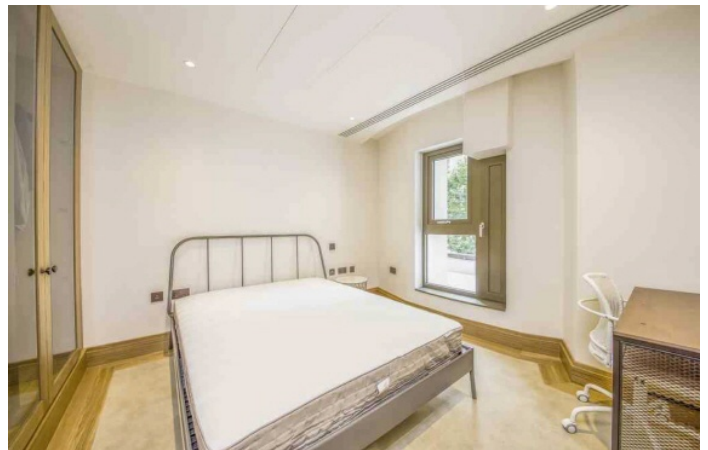
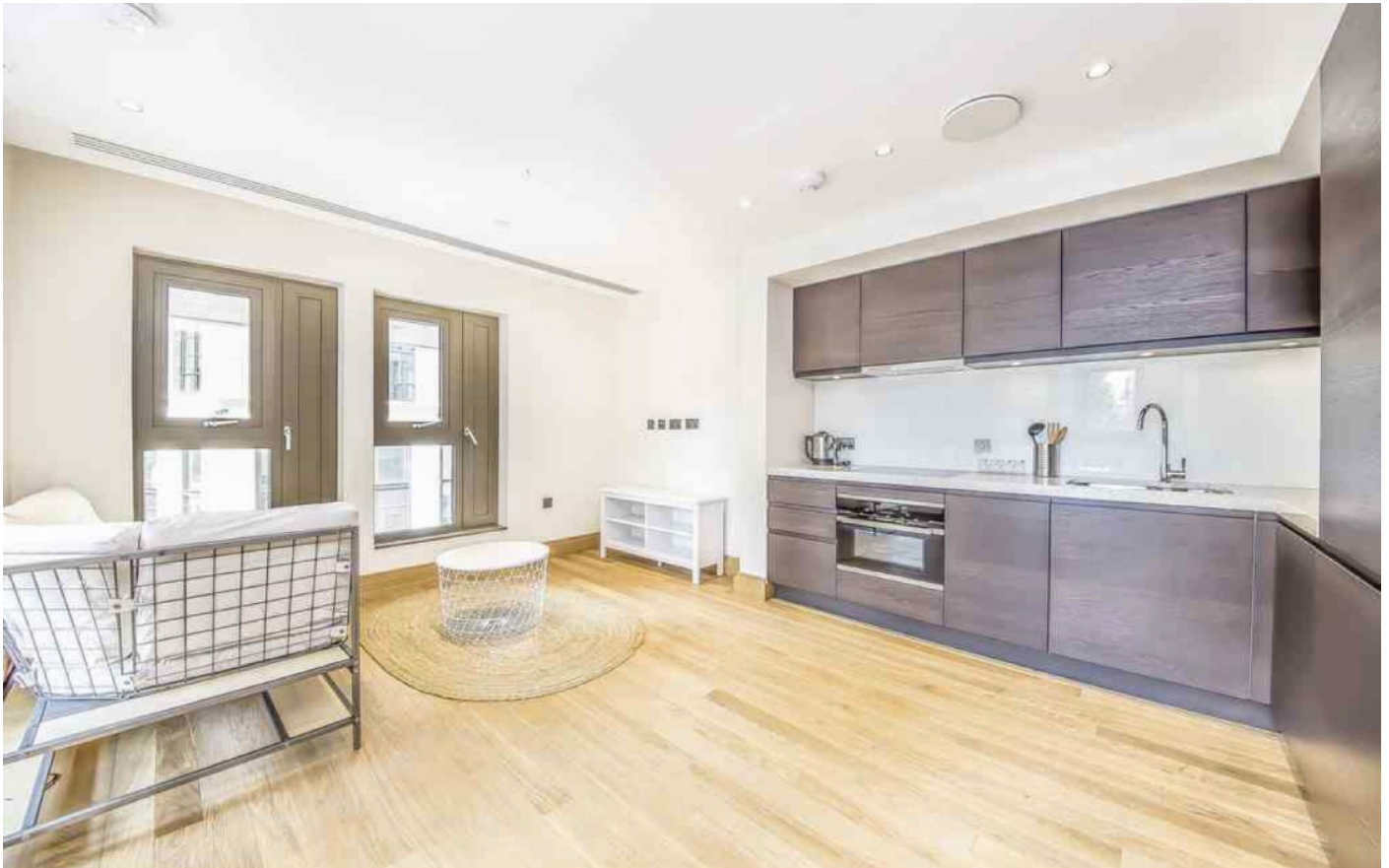
£875,000

An elegant one-bedroom apartment situated in the prestigious Cleland House, part of the well renowned Abell & Cleland development positioned in the heart of Westminster.

The Abell and Cleland development is located directly next to Burberry's London headquarters on Dean Ryle Street and within walking distance of the Houses of Parliament, Downing Street and St James Park. Transport links close by include Westminster and Pimlico tube station which are within short distance.

Features

- One Bedroom
- High Finish Throughout
- 24-Hour Concierge
- Gymnasium
- Swimming pool
- Long Lease

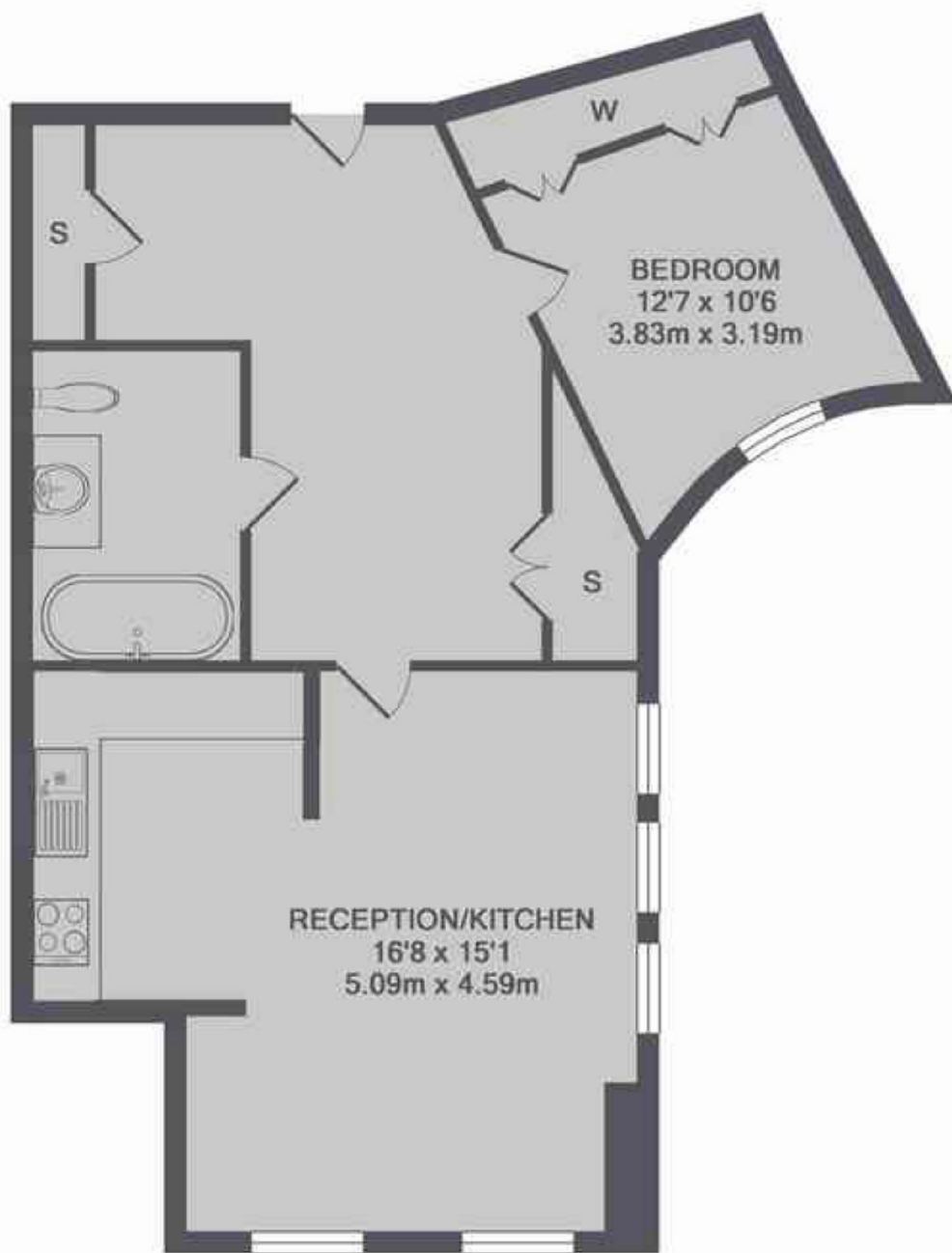


John Islip Street, SW1P

The modern living space is complemented by a fully fitted high-end open plan kitchen space, the large bedroom offers built in storage and plush finishes ensuring comfort and convenience. Across the hallway you'll find a sleek bathroom finished to a high standard and plenty of storage throughout. Further benefits include a range of amenities, including a state of the art gym, swimming pool, 24-hour concierge and private landscaped gardens.



John Islip Street, London, SW1P



TOTAL APPROX. FLOOR AREA 606 SQ.FT. (56.3 SQ.M.)

Dexters

Westminster
50 Churton Street
London
SW1V 2LP
Sales
020 7590 9570

Energy Rating: B. We aim to make our particulars both accurate and reliable. However they are not guaranteed; nor do they form part of an offer or contract. If you require clarification on any points then please contact us, especially if you're traveling some distance to view. Please note that appliances and heating systems have not been tested and therefore no warranties can be given as to their good working order.

 **RICS** | Regulated
Estate Agent
and Letting Agent

[dexters.co.uk](https://www.dexters.co.uk)