



Gloucester Street, SW1V

£1,200,000

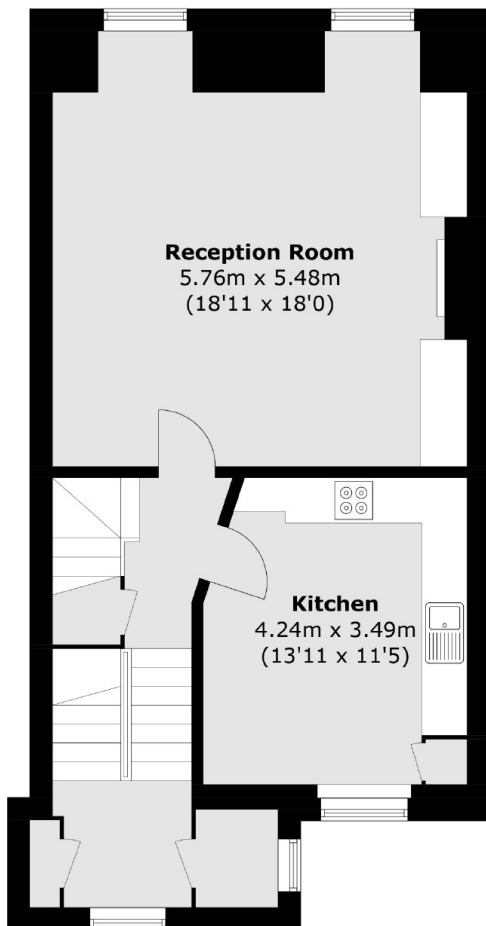
A stunningly presented top-floor maisonette, bathed in natural light and situated within a white stucco-fronted Victorian building on one of Pimlico's most desirable streets.

Gloucester Street is a highly coveted address in the heart of the "Pimlico Grid," offering convenient access to a variety of shops, bars, and restaurants in Pimlico and the vibrant area surrounding Victoria. The transport links are exceptional, with Victoria Station providing Gatwick Express services, mainline trains, and connections to the Circle, District, and Victoria tube lines. Additionally, the nearby Pimlico tube station (Victoria line) offers further connectivity.

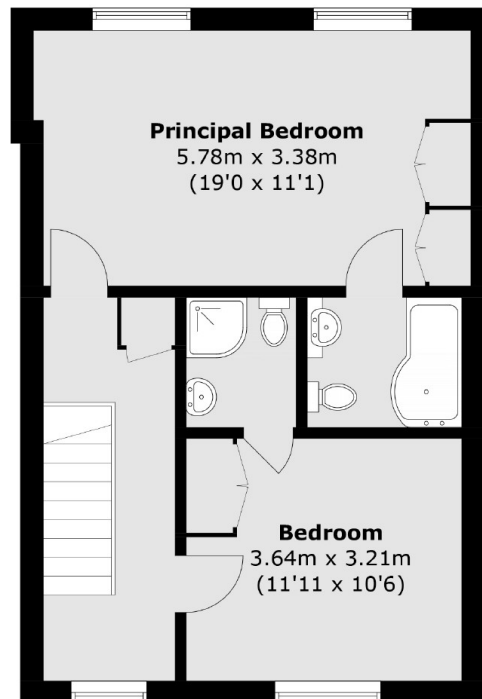
Features

- Share Of Freehold
- Two Bathrooms (en-suite)
- Central Pimlico
- White Stucco Fronted
- Transport Links Nearby
- Duplex

Gloucester Street,
London, SW1V



Third Floor



Fourth Floor



Second Floor

Total area (approx.): 107.8 sq. m (1,160.3 sq. ft)

Dexters

Westminster
50 Churton Street
London
SW1V 2LP
Sales
020 7590 9570

Energy Rating: D. We aim to make our particulars both accurate and reliable. However they are not guaranteed; nor do they form part of an offer or contract. If you require clarification on any points then please contact us, especially if you're traveling some distance to view. Please note that appliances and heating systems have not been tested and therefore no warranties can be given as to their good working order.

 **RICS** | Regulated
Estate Agent
and Letting Agent

[dexters.co.uk](https://www.dexters.co.uk)