



Erasmus Street, SW1P

£725,000

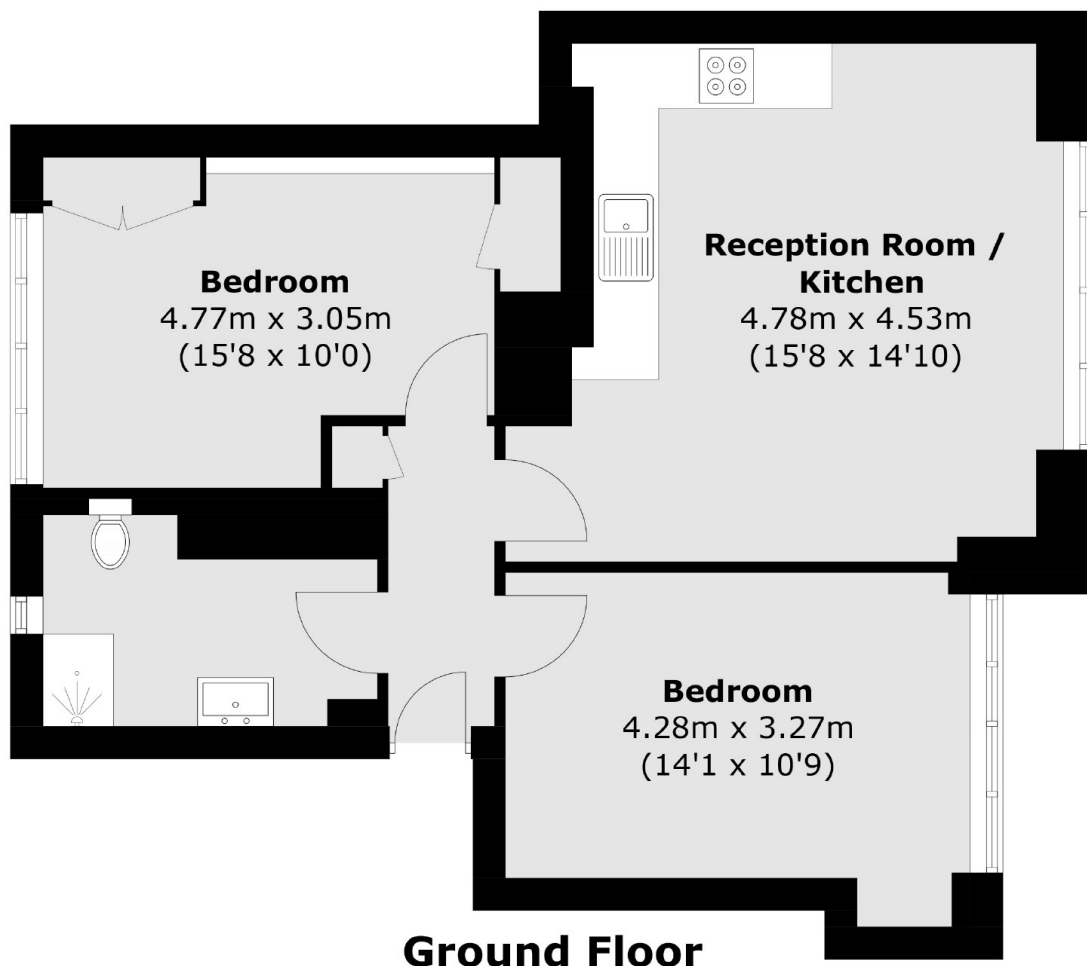
A well presented apartment situated in a highly desirable red brick block in the heart of Westminster. This property benefits from two double bedrooms, a modern open - plan kitchen and is situated on the ground floor, providing easy access to the beautiful communal courtyard. It is a leafy and notably quiet street for SW1 with shared use of Millbank Gardens close.

Centrally located, the apartment is near to the Tate Britain gallery and a few minutes walk away from Pimlico and Victoria Stations. Schools, shops, restaurants and other amenities are also within close proximity.

Features

- Recently Extended Lease
- Close To Transport Links
- Communal Garden
- Two Bedrooms
- Ground Floor
- No Chain

Erasmus Street,
London, SW1P



Total area (approx.): 58.6 sq. m (631.1 sq. ft)

Dexters

Westminster
50 Churton Street
London
SW1V 2LP
Sales
020 7590 9570

Energy Rating: C. We aim to make our particulars both accurate and reliable. However they are not guaranteed; nor do they form part of an offer or contract. If you require clarification on any points then please contact us, especially if you're traveling some distance to view. Please note that appliances and heating systems have not been tested and therefore no warranties can be given as to their good working order.

 **RICS** | Regulated
Estate Agent
and Letting Agent

dexters.co.uk