



Belgrave Road, SW1V

£900,000

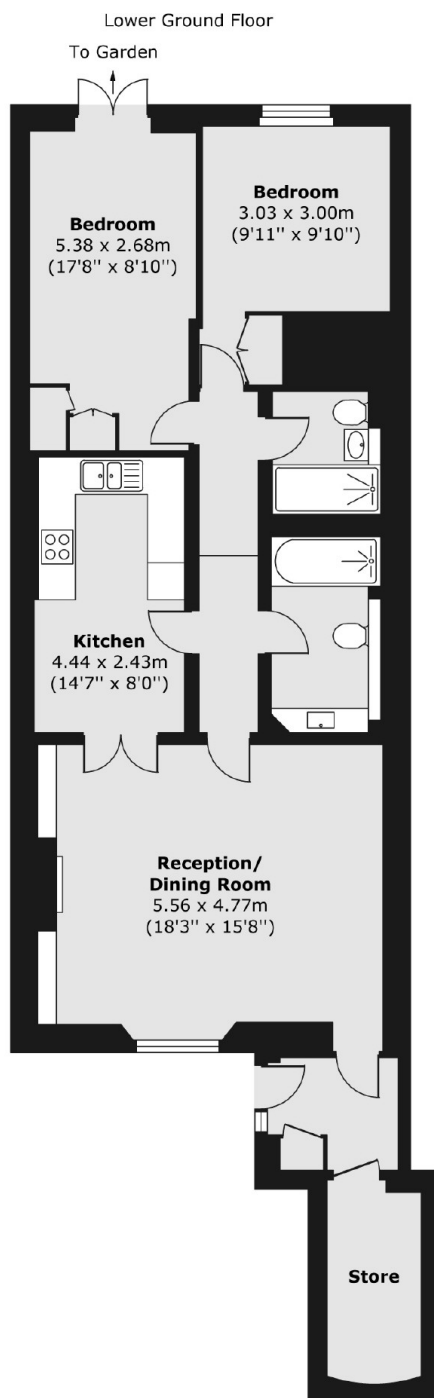
A charmingly presented two double bedroom, two bathroom garden flat situated within a wonderful period conversion in the heart of Pimlico, with its own private entrance.

Belgrave Road runs for the full length of the Pimlico Grid and is conveniently located for transport links from Victoria Station and Pimlico Station. The many amenities of Chelsea and Belgravia are within easy reach.

Features

- Two Bedrooms
- Two Bathrooms
- Private Garden
- Own Front Door
- No Onward Chain
- Long Leasehold (c. 167 years remaining)

Belgrave Road, London, SW1V



Total area (approx.) 89.69 sq. m (965 sq. ft)

Dexters

Westminster
50 Churton Street
London
SW1V 2LP
Sales
020 7590 9570

Energy Rating: C. We aim to make our particulars both accurate and reliable. However they are not guaranteed; nor do they form part of an offer or contract. If you require clarification on any points then please contact us, especially if you're traveling some distance to view. Please note that appliances and heating systems have not been tested and therefore no warranties can be given as to their good working order.

 **RICS** | Regulated
Estate Agent
and Letting Agent

[dexters.co.uk](https://www.dexters.co.uk)