



## Lupus Street, SW1V

### £570,000

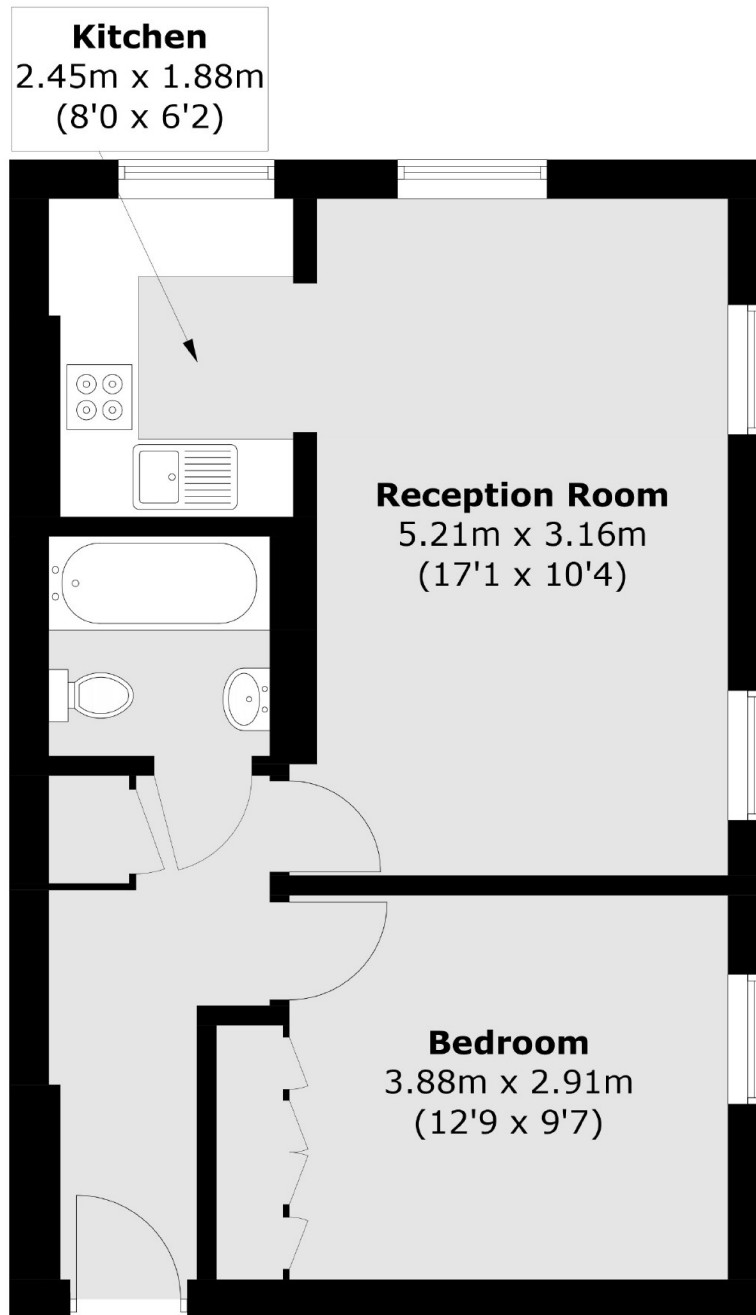
A delightful one-bedroom apartment located on the first floor of this charming building. The property features a dual-aspect reception room, complete with double-glazed, floor-to-ceiling sash windows that flood the space with natural light. The property also includes built-in full-height wardrobes in the bedroom, offering ample storage space, as well as additional storage above the bathroom for extra convenience.

Transport connections are superb, with Pimlico Tube station and the Victoria transport hub just a short walk away. A wide selection of trendy shops and restaurants can be found in the nearby areas of Pimlico and Victoria Street.

### Features

- First Floor
- One Double Bedroom
- Double Glazed Windows
- Built In Storage
- White Stucco Fronted
- Central Pimlico

# Lupus Street, London, SW1V



Total area (approx.): 43.6 sq. m (469.3 sq. ft)

## Dexters

Westminster  
50 Churton Street  
London  
SW1V 2LP  
Sales  
020 7590 9570

Energy Rating: C. We aim to make our particulars both accurate and reliable. However they are not guaranteed; nor do they form part of an offer or contract. If you require clarification on any points then please contact us, especially if you're traveling some distance to view. Please note that appliances and heating systems have not been tested and therefore no warranties can be given as to their good working order.

 **RICS** | Regulated  
Estate Agent  
and Letting Agent

[dexters.co.uk](https://dexters.co.uk)