

## Kings Gate Walk, SW1E

### £2,250,000

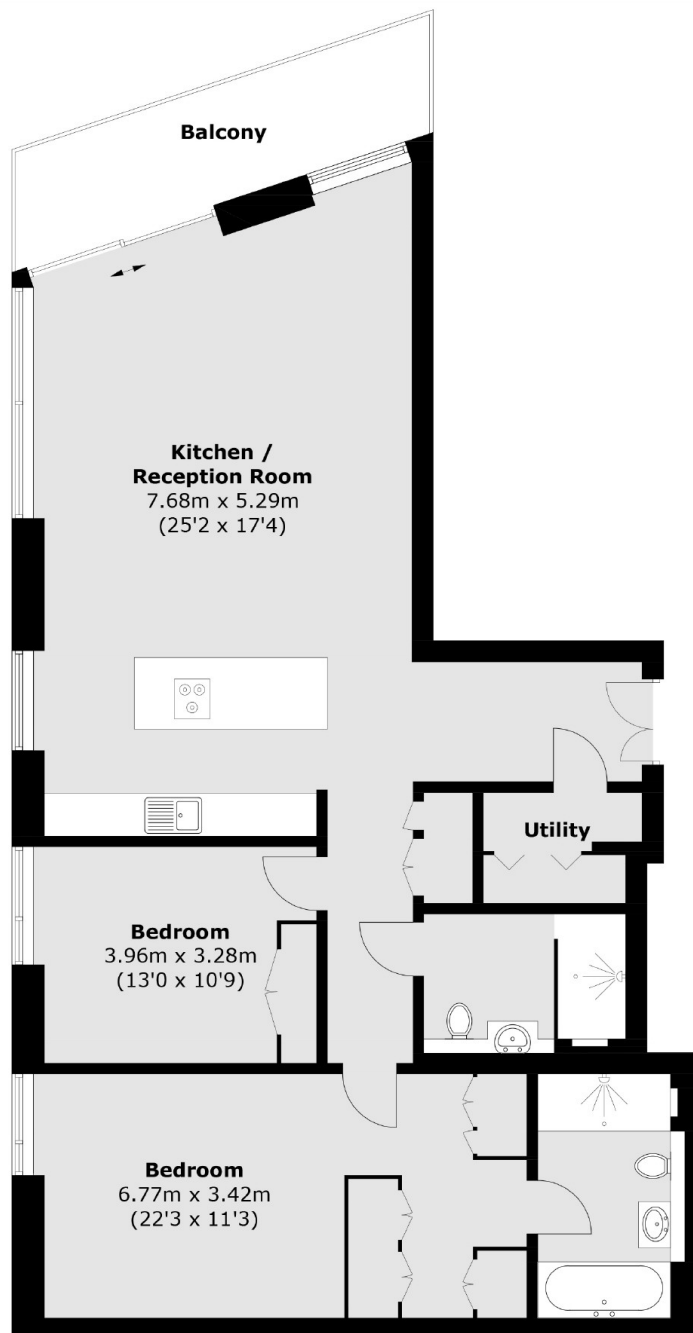
This charming two bedroom, two bathroom apartment in Kings Gate Walk offers a perfect blend of modern living and historical charm, ideal choice for those who appreciate convenience to local amenities and transport links whilst complimented by the iconic surroundings Westminster provides.

Kings Gate Walk is located within short walking distance of Cardinal Place that offers an abundance of boutique shops and fine dining as well as being conveniently located within close proximity of Victoria station.

### Features

- Two Double Bedroom
- Two Bathroom (one en-suite)
- Underground parking
- 24 Hour Concierge
- Private Terrace
- Long Lease

# Kings Gate Walk, London, SW1E



## Sixth Floor

Total area (approx.): 112.5 sq. m (1,210.9 sq. ft)

Balcony area: 9.6 sq. m (103.3 sq. ft)

# Dexters

Westminster  
50 Churton Street  
London  
SW1V 2LP

Sales  
020 7590 9570

Energy Rating: B. We aim to make our particulars both accurate and reliable. However they are not guaranteed; nor do they form part of an offer or contract. If you require clarification on any points then please contact us, especially if you're traveling some distance to view. Please note that appliances and heating systems have not been tested and therefore no warranties can be given as to their good working order.

 **RICS** | Regulated  
Estate Agent  
and Letting Agent

[dexters.co.uk](https://www.dexters.co.uk)