



Marsham Street, SW1P

£425,000

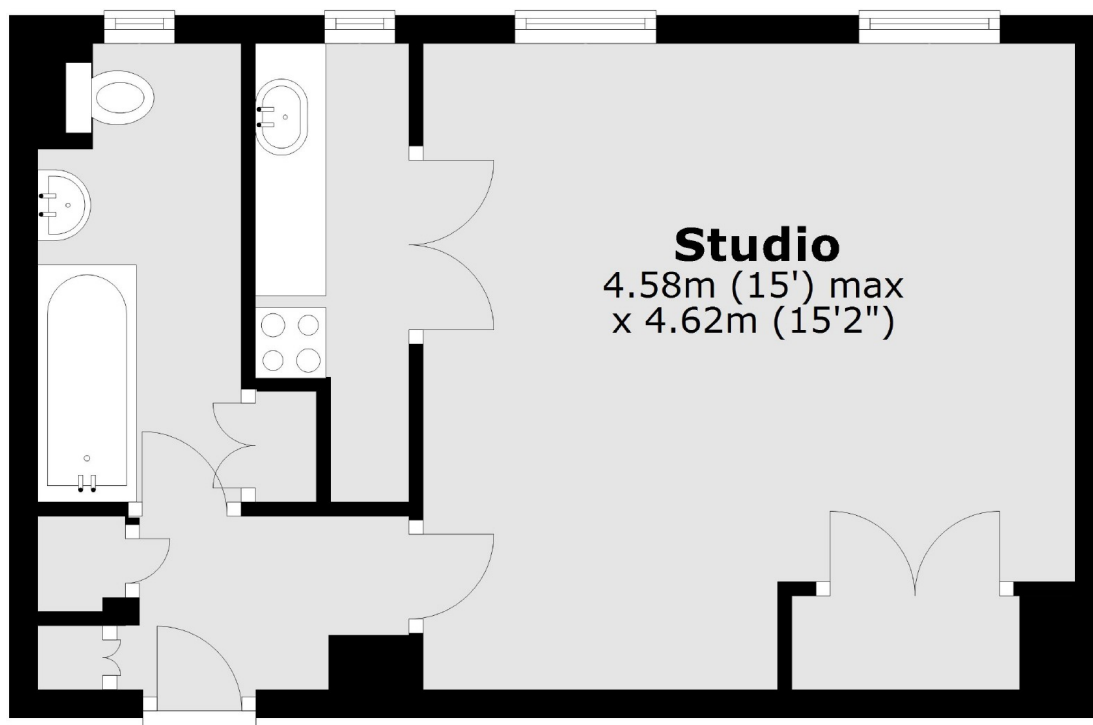
A large delightful studio apartment located on the second floor of this highly sought after 1930's art deco mansion block.

Transport links are excellent with Westminster, Pimlico, St James Park tube and Victoria transport hub all within easy reach. A variety of fashionable shops, bars and restaurants can be found on nearby Victoria Street.

Features

- Large Studio
- No Onward Chain
- c. 962 Year Lease
- 24 Hour Porter
- Communal Heating & Hot Water
- Communal Garden

**Marsham Street,
London, SW1P**



Total area: approx. 33.6 sq. metres (362.0 sq. feet)

Dexters

Westminster
50 Churton Street
London
SW1V 2LP
Sales
020 7590 9570

Energy Rating: C. We aim to make our particulars both accurate and reliable. However they are not guaranteed; nor do they form part of an offer or contract. If you require clarification on any points then please contact us, especially if you're traveling some distance to view. Please note that appliances and heating systems have not been tested and therefore no warranties can be given as to their good working order.

 **RICS** | Regulated
Estate Agent
and Letting Agent

[dexters.co.uk](https://www.dexters.co.uk)