

## Churchill Gardens, SW1V

£475,000

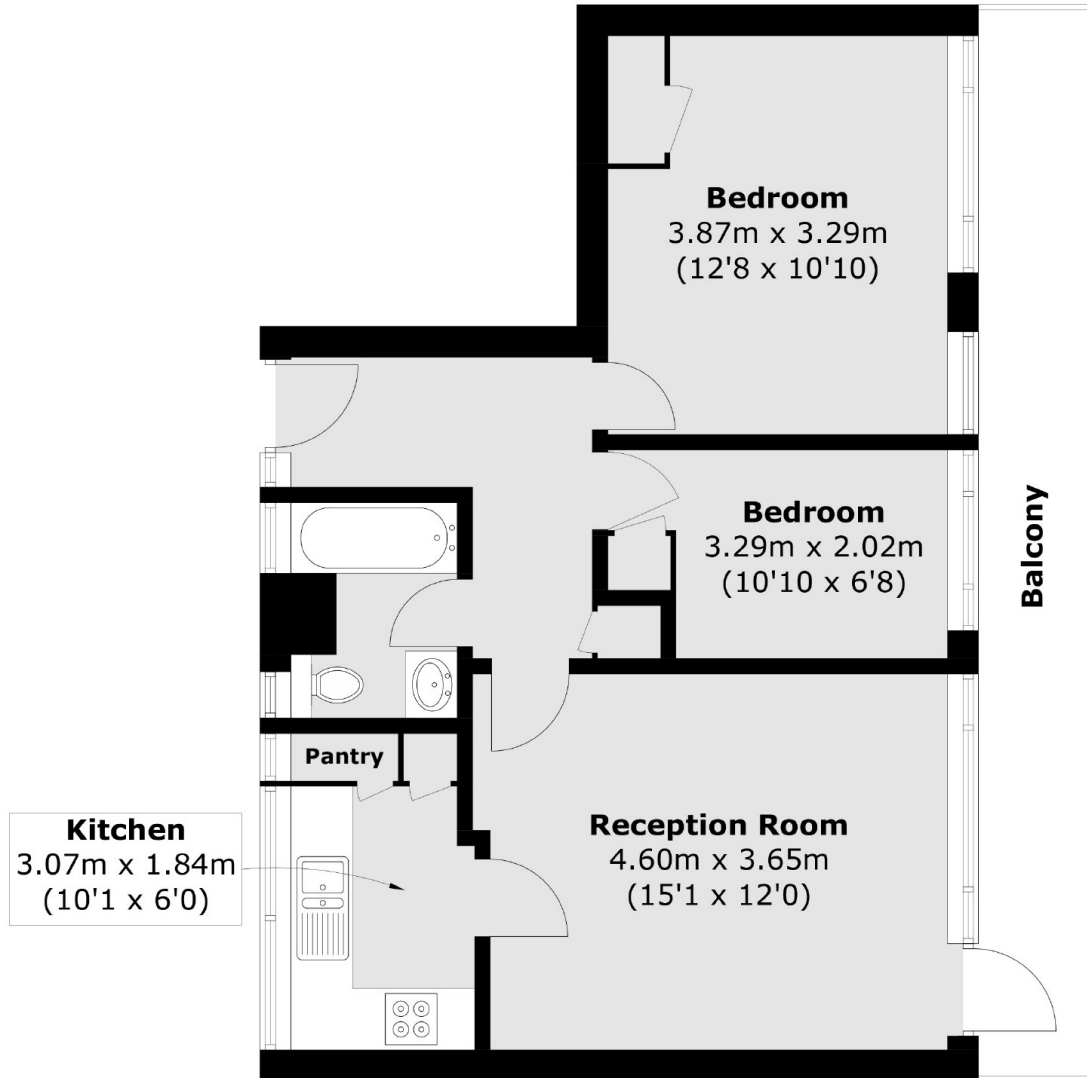
A light and attractive two bedroom flat on the 9th floor (Lift) of this purpose built block. The flat benefits from 2 double bedrooms and a good sized reception room along with a large private balcony.

Chippendale House is ideally located close to the River Thames and is within walking distance of the amenities of Pimlico and Chelsea. Transport links are close by at either Pimlico or Victoria.

### Features

- Ninth Floor
- Private balcony
- Communal Heating/Hot Water
- Lift
- River Thames Nearby

Churchill Gardens,  
London, SW1V



Total area (approx.): 53.3 sq. m (573.7 sq. ft)  
Balcony: 11.2 sq. m (120.5 sq. ft)