



Causton Street, SW1P

£850,000

A spacious three-bedroom flat in an imposing late Victorian mansion block, just moments from Pimlico tube. This property benefits from lots of natural light, built-in storage, a separate kitchen, and spans over 1,000 square feet.

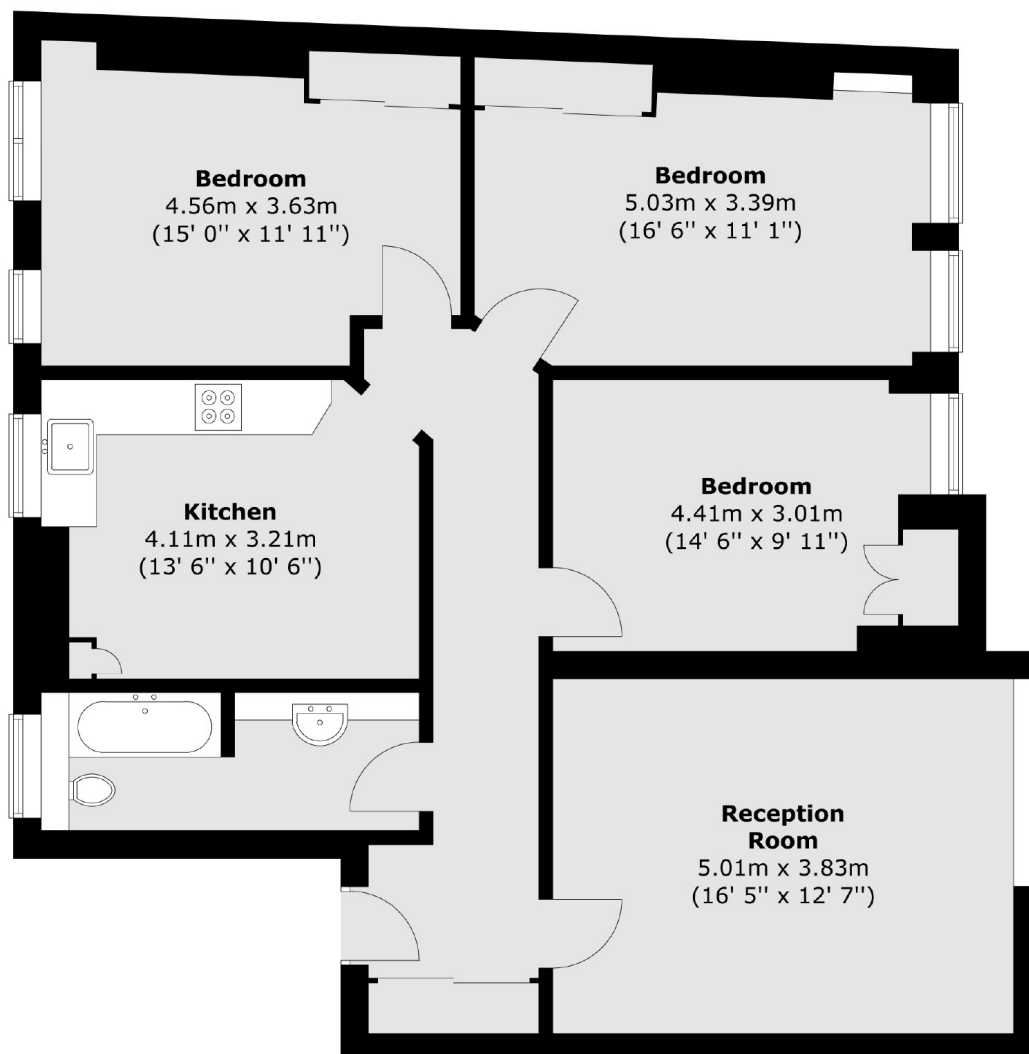
St George's Mansions is very close to Pimlico tube and convenient for Victoria and Vauxhall stations. The river, Tate Britain, and Westminster are all nearby.

Features

- Recently Extended Lease
- Three Double Bedrooms
- Close Proximity To Tube
- Over 1000 Square Feet
- Mansion Block
- Fourth Floor

Causton Street, London, SW1P

Fourth Floor



Total area (approx.) : 98.5 sq. m (1060 sq. ft)