



Rochester Row, SW1P

£995,000

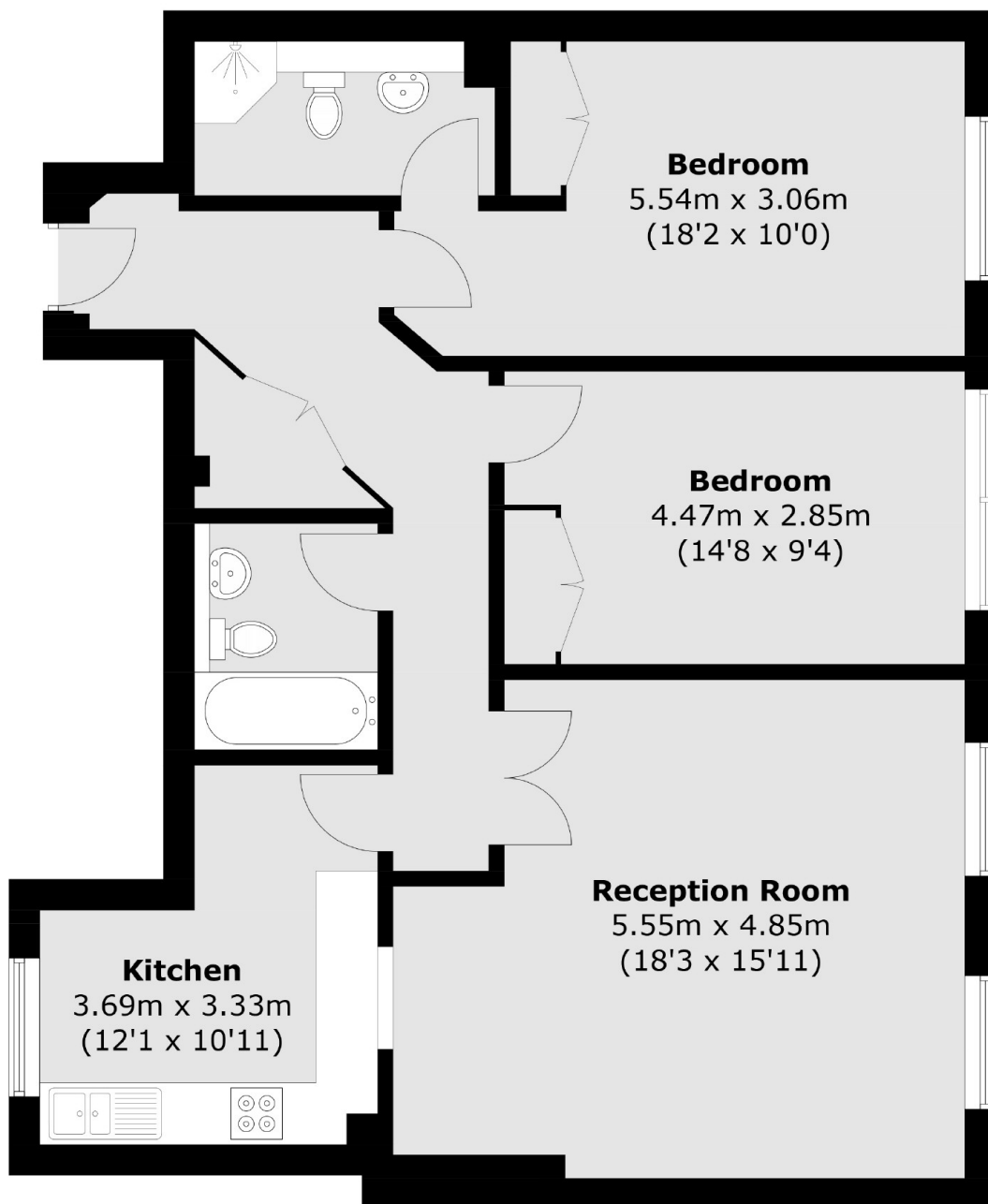
A beautifully appointed lateral two-bedroom apartment located on the first floor of a desirable block in Westminster is offered to the market with no onward chain. The property also benefits from a daytime porter and secure underground parking.

Rochester Row is located just north of the attractive Vincent Square and is conveniently situated for all the amenities in Pimlico and Victoria.

Features

- Two Double Bedrooms
- First Floor
- Porter
- Secure Underground Parking
- No Onward Chain
- Long Leasehold

Rochester Row, London, SW1P



Total area (approx.): 87.1 sq. m (937.5 sq. ft)

Dexters

Westminster
50 Churton Street
London
SW1V 2LP
Sales
020 7590 9570

Energy Rating: C. We aim to make our particulars both accurate and reliable. However they are not guaranteed; nor do they form part of an offer or contract. If you require clarification on any points then please contact us, especially if you're traveling some distance to view. Please note that appliances and heating systems have not been tested and therefore no warranties can be given as to their good working order.

 **RICS** | Regulated
Estate Agent
and Letting Agent

[dexters.co.uk](https://www.dexters.co.uk)