



Rochester Row, SW1P

£1,100,000

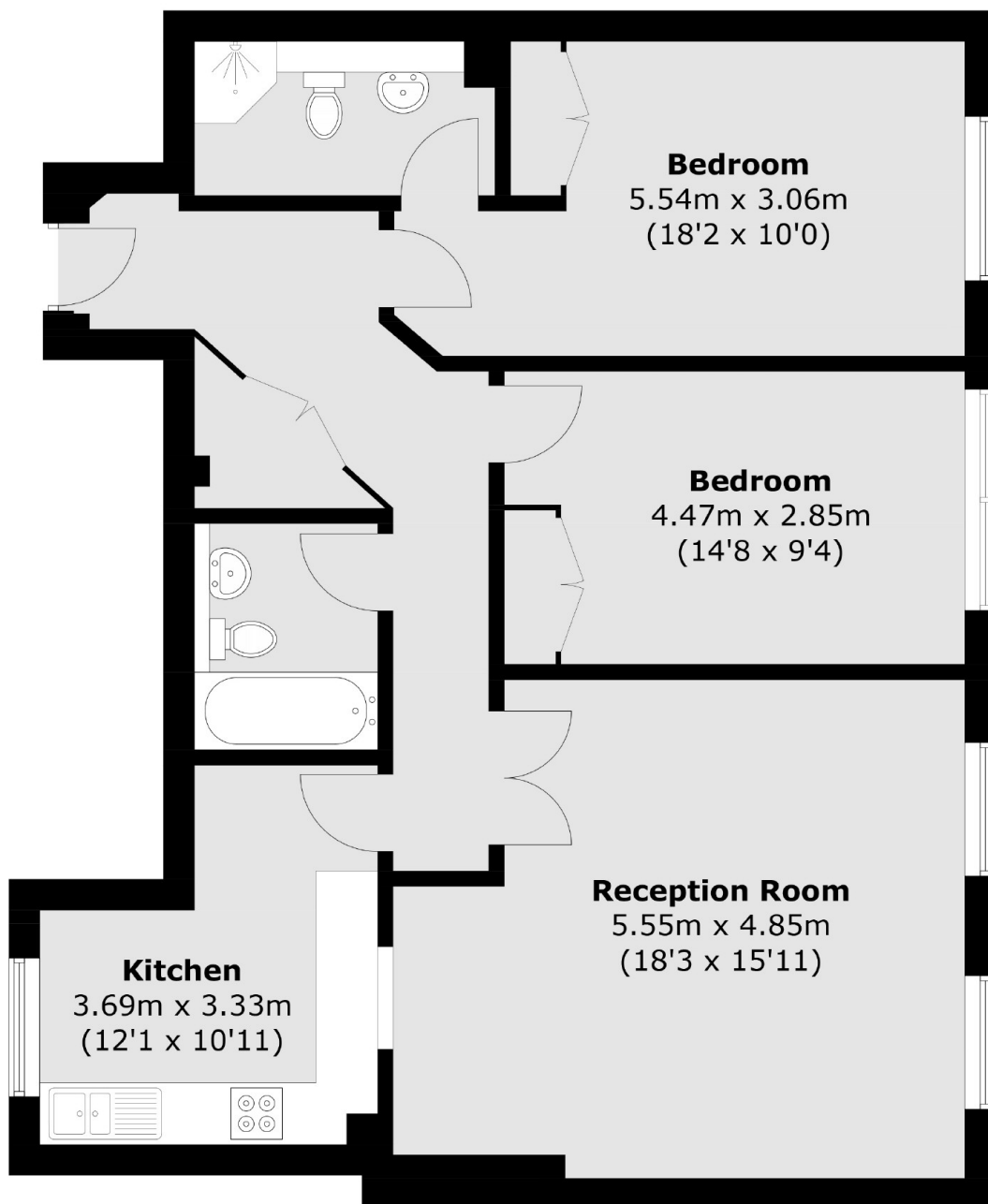
A beautifully appointed lateral two-bedroom apartment located on the first floor of a desirable block in Westminster is offered to the market with no onward chain. The property also benefits from a daytime porter and secure underground parking.

Rochester Row is located just north of the attractive Vincent Square and is conveniently situated for all the amenities in Pimlico and Victoria.

Features

- Two Double Bedrooms
- First Floor
- Porter
- Secure Underground Parking
- No Onward Chain
- Long Leasehold

Rochester Row, London, SW1P



Total area (approx.): 87.1 sq. m (937.5 sq. ft)