



Carlisle Place, SW1P

£1,875,000

An imposing late Victorian Mansion flat within the Westminster Cathedral Conservation area. Positioned on the fourth floor, a large eat-in kitchen, spacious rooms and large windows. The block has a daytime porter.

Carlisle Place is located between Victoria Station and Westminster Cathedral. Transport links are excellent, with Victoria transport hub offering a direct link to Gatwick Airport and trains to the south and the south east.

Features

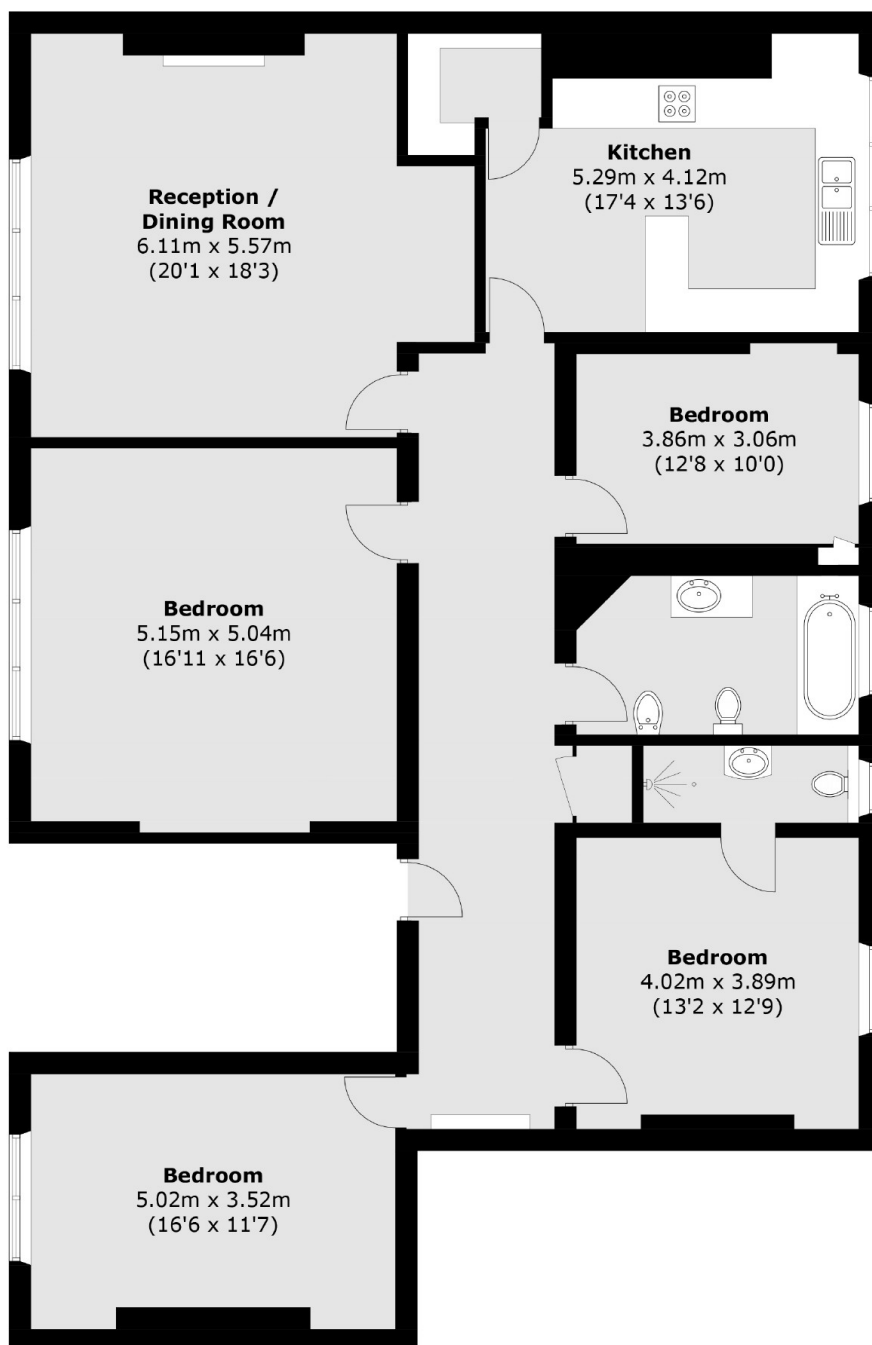
- Recently Renovated
- Large Windows
- Four Bedrooms
- Period Features
- Top Floor
- Porter



Carlisle Place, SW1P



Carlisle Place, London, SW1P



Total area (approx.): 168.4 sq. m (1,812.6 sq. ft)