



Vincent Square, SW1P

£900,000

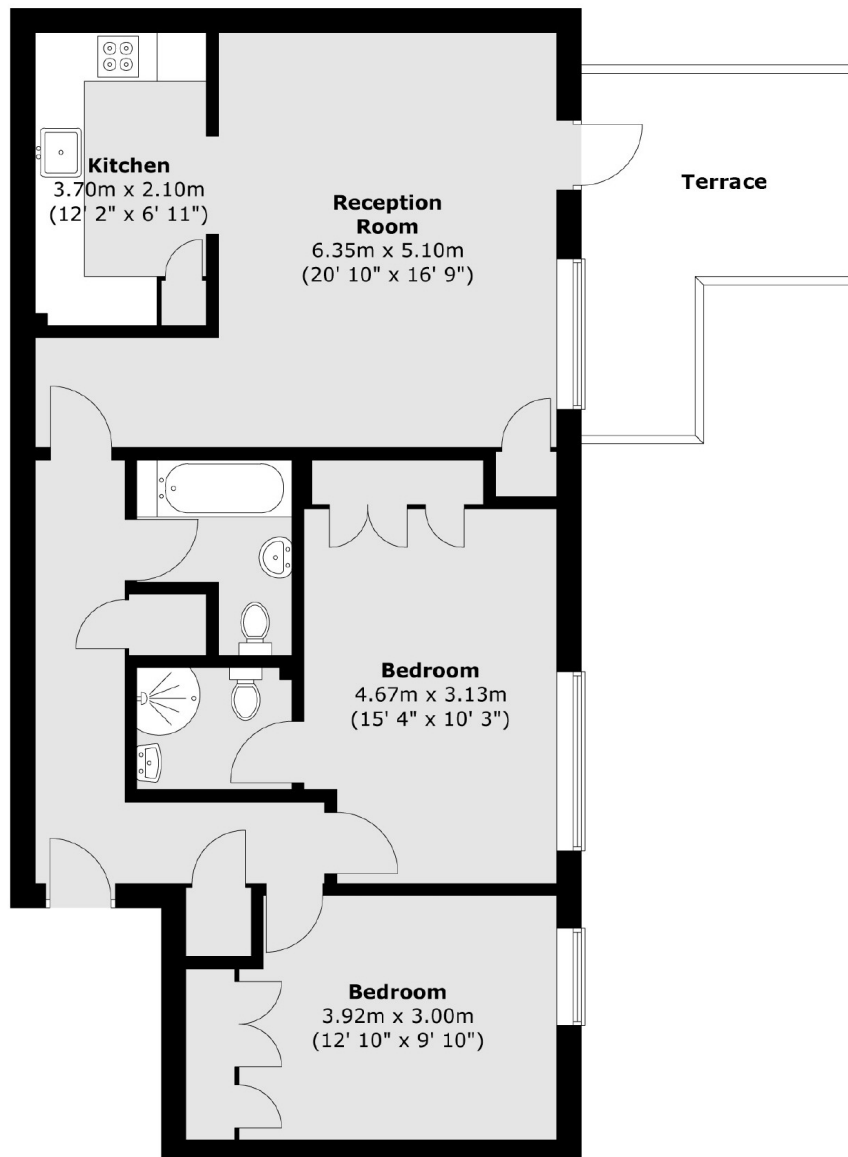
A beautifully presented two-bedroom apartment, located on the first floor overlooking the communal gardens. This property benefits from its own private terrace, two bathrooms, and designated parking.

56 Vincent Square is just a few minutes from Victoria Street, which features a variety of fashionable shops and restaurants. The transport links are excellent, with the Victoria transport hub nearby, providing trains to the South East and the Gatwick Express.

Features

- Close To Transport Links
- No Onward Chain
- Share Of Freehold
- Private Terrace
- Off Street Parking
- Porter

Vincent Square, London, SW1P



Total area (approx.) : 81.5 sq. m (877 sq. ft)
Total terrace area (approx.) : 11.3 sq. m (122 sq. ft)

Dexters

Westminster
50 Churton Street
London
SW1V 2LP
Sales
020 7590 9570

Energy Rating: B. We aim to make our particulars both accurate and reliable. However they are not guaranteed; nor do they form part of an offer or contract. If you require clarification on any points then please contact us, especially if you're traveling some distance to view. Please note that appliances and heating systems have not been tested and therefore no warranties can be given as to their good working order.

 **RICS** | Regulated
Estate Agent
and Letting Agent

[dexters.co.uk](https://www.dexters.co.uk)