



Marsham Street, SW1P

£2,200,000

This expansive three-bedroom lateral apartment is situated on the ninth floor of a highly regarded development in Westminster. It boasts views overlooking the iconic Houses of Parliament and further Westminster.

Located on Marsham Street just moments from The Tate Britain and within walking distance of the amenities of Victoria Street and the transport connections of Westminster, Pimlico and St James's Park Underground Stations.

Features

- Three Double Bedrooms
- Three En-Suites
- No Onward Chain
- Ninth Floor
- 24 Hour Concierge
- Gym & Sauna

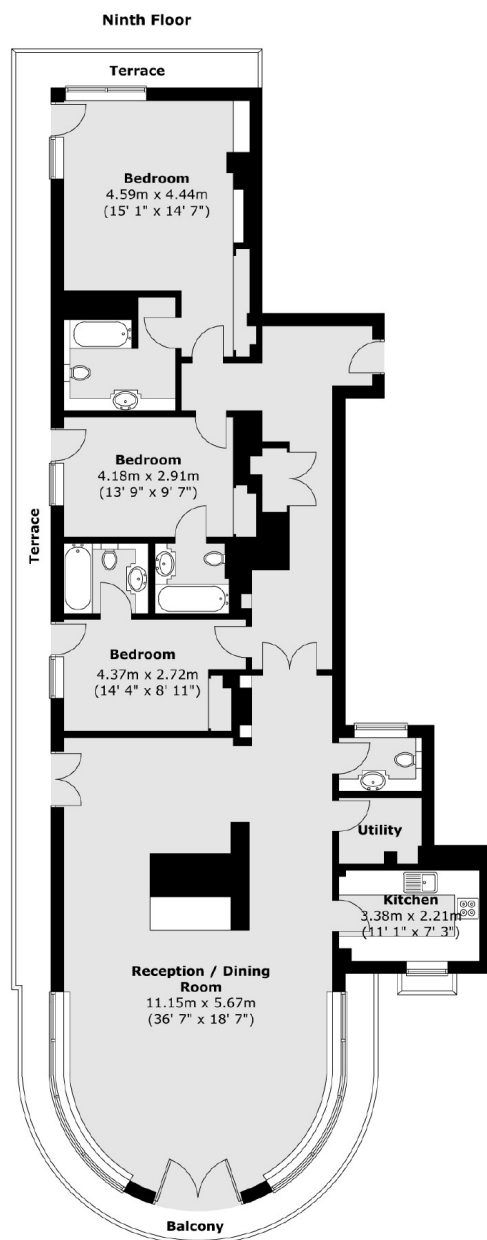


Marsham Street, SW1P

The property offers spacious living and entertaining areas, a separate kitchen, and plenty of storage. St John's Building is situated in a highly desirable development that includes a 24-hour concierge, a residents-only leisure suite, a meeting room, and secure valet parking underground.



Marsham Street, London, SW1P



Total area (approx.) : 174.5 sq. m (1878 sq. ft)
Total balcony / terrace area (approx.) : 35.4 sq. m (381 sq. ft)

Dexters

Westminster
50 Churton Street
London
SW1V 2LP
Sales
020 7590 9570

Energy Rating: C. We aim to make our particulars both accurate and reliable. However they are not guaranteed; nor do they form part of an offer or contract. If you require clarification on any points then please contact us, especially if you're traveling some distance to view. Please note that appliances and heating systems have not been tested and therefore no warranties can be given as to their good working order.

 **RICS** | Regulated
Estate Agent
and Letting Agent

[dexters.co.uk](https://www.dexters.co.uk)