



## Marsham Street, SW1P

£2,500,000

This expansive three-bedroom lateral apartment is situated on the ninth floor of a highly regarded development in Westminster. It boasts views overlooking the iconic Houses of Parliament and further Westminster

Located on Marsham Street just moments from The Tate Britain and within walking distance of the amenities of Victoria Street and the transport connections of Westminster, Pimlico and St James's Park Underground Stations.

### Features

- Three Double Bedrooms
- Three En-Suites
- No Onward Chain
- Ninth Floor
- 24 Hour Concierge
- Gym & Sauna

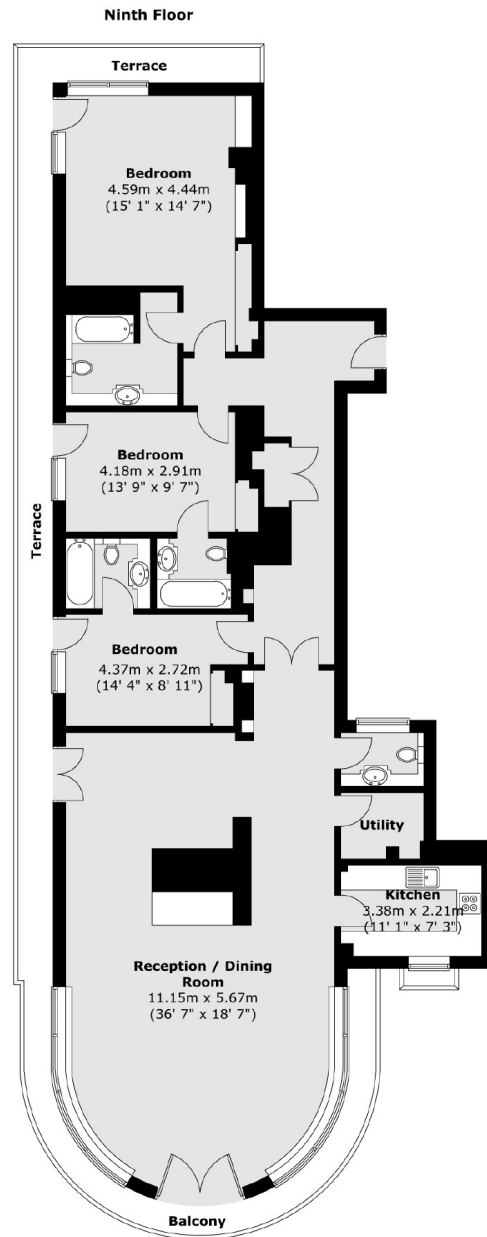


## Marsham Street, SW1P

The property offers spacious living and entertaining areas, a separate kitchen, and plenty of storage. St John's Building is situated in a highly desirable development that includes a 24-hour concierge, a residents-only leisure suite, a meeting room, and secure valet parking underground.



# Marsham Street, London, SW1P



Total area (approx.) : 174.5 sq. m (1878 sq. ft)  
Total balcony / terrace area (approx.) : 35.4 sq. m (381 sq. ft)