



## Vincent Square, SW1P

### £800,000

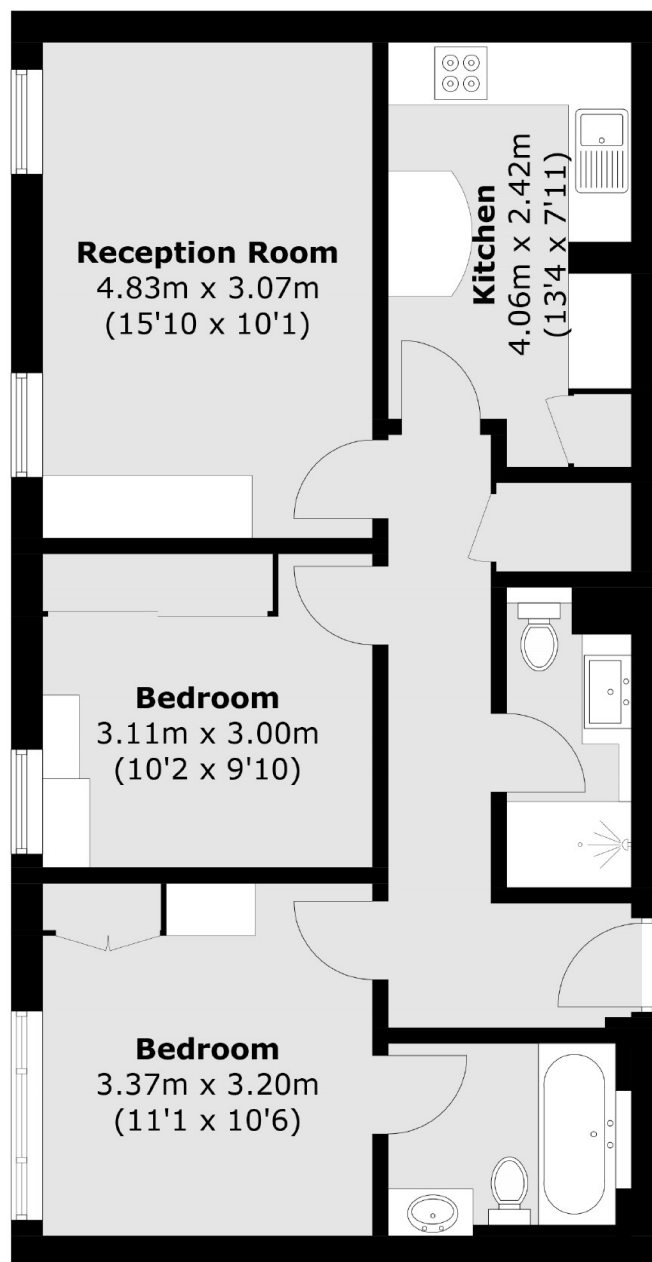
A well-proportioned, second-floor apartment with two bedrooms (one en-suite) located in a sought-after portered block. The property also features a reception room, a separate eat-in kitchen, and a family bathroom. Offered chain-free.

Vincent House is conveniently located near Pimlico underground and Victoria main line stations. It is also close to the fashionable shops and restaurants in Pimlico and on Victoria Street.

### Features

- Share Of Freehold
- Two Bedrooms
- Two Bathrooms (one en-suite)
- Second Floor
- No Onward Chain
- Porter

# Vincent Square, London, SW1P



Total area (approx.): 64.2 sq. m (691.0 sq. ft)

## Dexters

Westminster  
50 Churton Street  
London  
SW1V 2LP  
Sales  
020 7590 9570

Energy Rating: C. We aim to make our particulars both accurate and reliable. However they are not guaranteed; nor do they form part of an offer or contract. If you require clarification on any points then please contact us, especially if you're traveling some distance to view. Please note that appliances and heating systems have not been tested and therefore no warranties can be given as to their good working order.

 **RICS** | Regulated  
Estate Agent  
and Letting Agent

[dexters.co.uk](https://www.dexters.co.uk)