



## Regency Street, SW1P

### £700,000

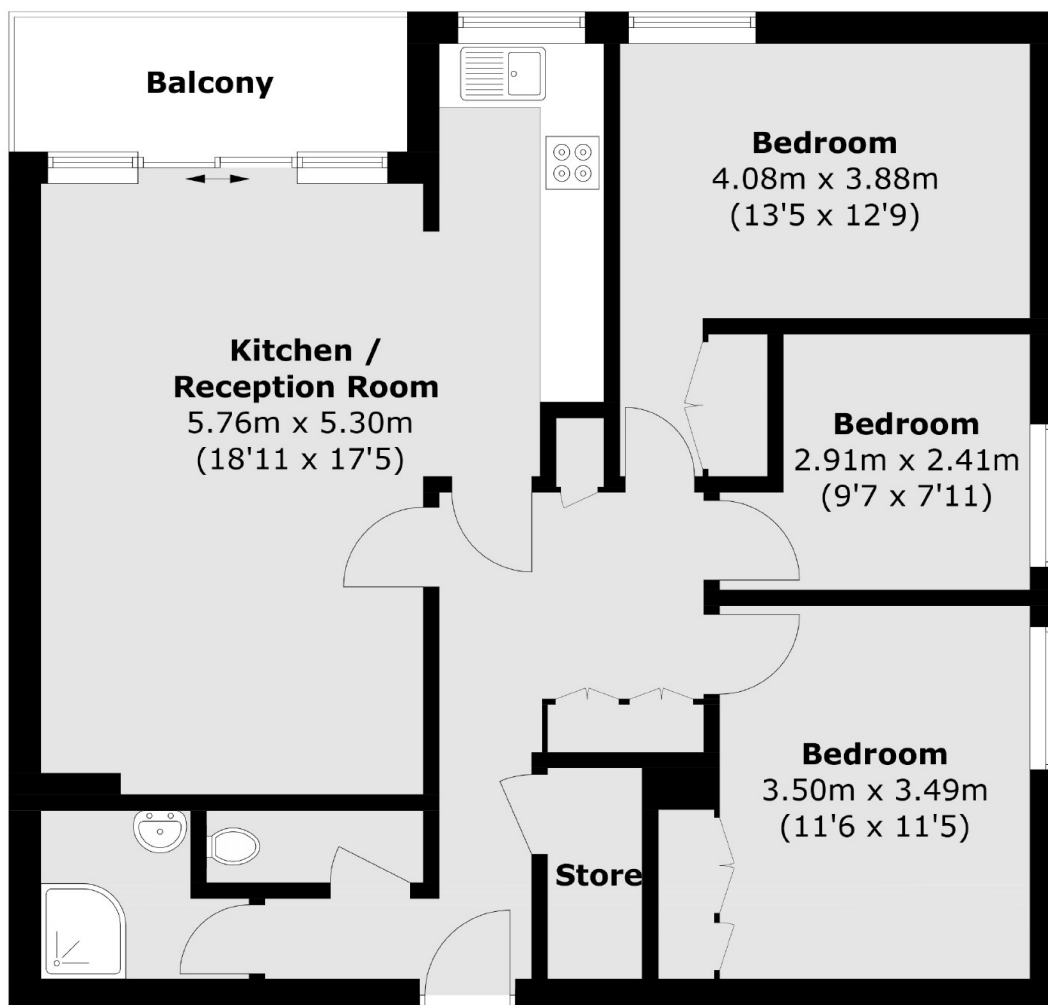
A well presented and bright three bedroom flat with a private balcony, situated on the 6th floor (with lift) in the centre of Westminster

Hide Tower is conveniently located for the shops, cafes and restaurants of Westminster and Pimlico. The nearest public transport is at Pimlico (Victoria line) and Victoria station (Victoria, Circle and District lines, Mainline station and Gatwick Express).

### Features

- Three Bedroom Flat
- Long Leasehold
- Lift
- Private Balcony
- 6th Floor
- Well Presented

# Regency Street, London, SW1P



Total area (approx.): 77.5 sq. m (834.2 sq. ft)  
Balcony: 4.7 sq. m (50.5 sq. ft)