



## Vincent Square, SW1P

£1,075,000

This is an exceptional two-bedroom, two-bathroom apartment with a balcony, offering wonderful garden views. It has a sleek contemporary finish throughout, complimented by a warm, inviting atmosphere. It boasts a spacious living and dining area, large bedrooms, and a modern kitchen. Situated on prestigious Vincent Square, this property has a perfect blend of luxury, convenience, and prime location.

56 Vincent Square is a few minutes from Victoria Street where there are a variety of fashionable shops and restaurants. Transport links are excellent with Victoria transport hub nearby with trains to the South East and the Gatwick Express.

### Features

- Two Large Bedrooms
- First Floor
- Share of Freehold
- Secure Parking
- Balcony
- Garden Views



## Vincent Square, SW1P

Situated on the first floor, there is an expansive double aspect reception/dining room. From the dining area there is access to a balcony where there are wonderful views on to the communal gardens.

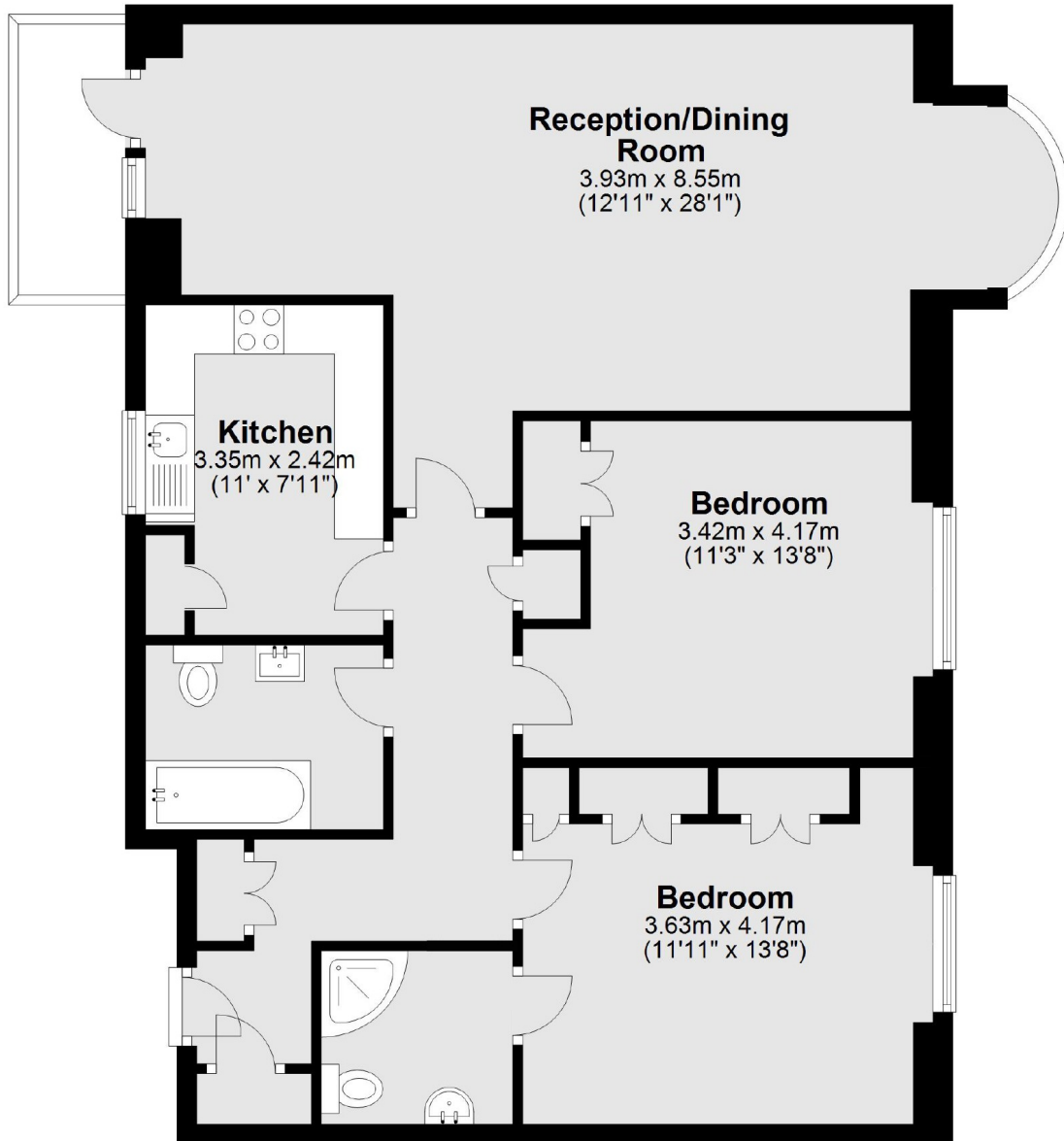
The kitchen is beautifully designed in a contemporary style, with an electric induction hob, oven and microwave and there are lovely views on to the gardens. The two bedrooms are a good size and have roomy fitted wardrobes, there are two nicely designed bathrooms

This is a splendid apartment and would make a delightful London home or an excellent pied-à-terre.



# Vincent Square, London, SW1P

## First Floor



Main area: Approx. 89.3 sq. metres (960.9 sq. feet)  
Plus balconies, approx. 3.3 sq. metres (35.3 sq. feet)