



Greycoat Street, SW1P

£1,050,000

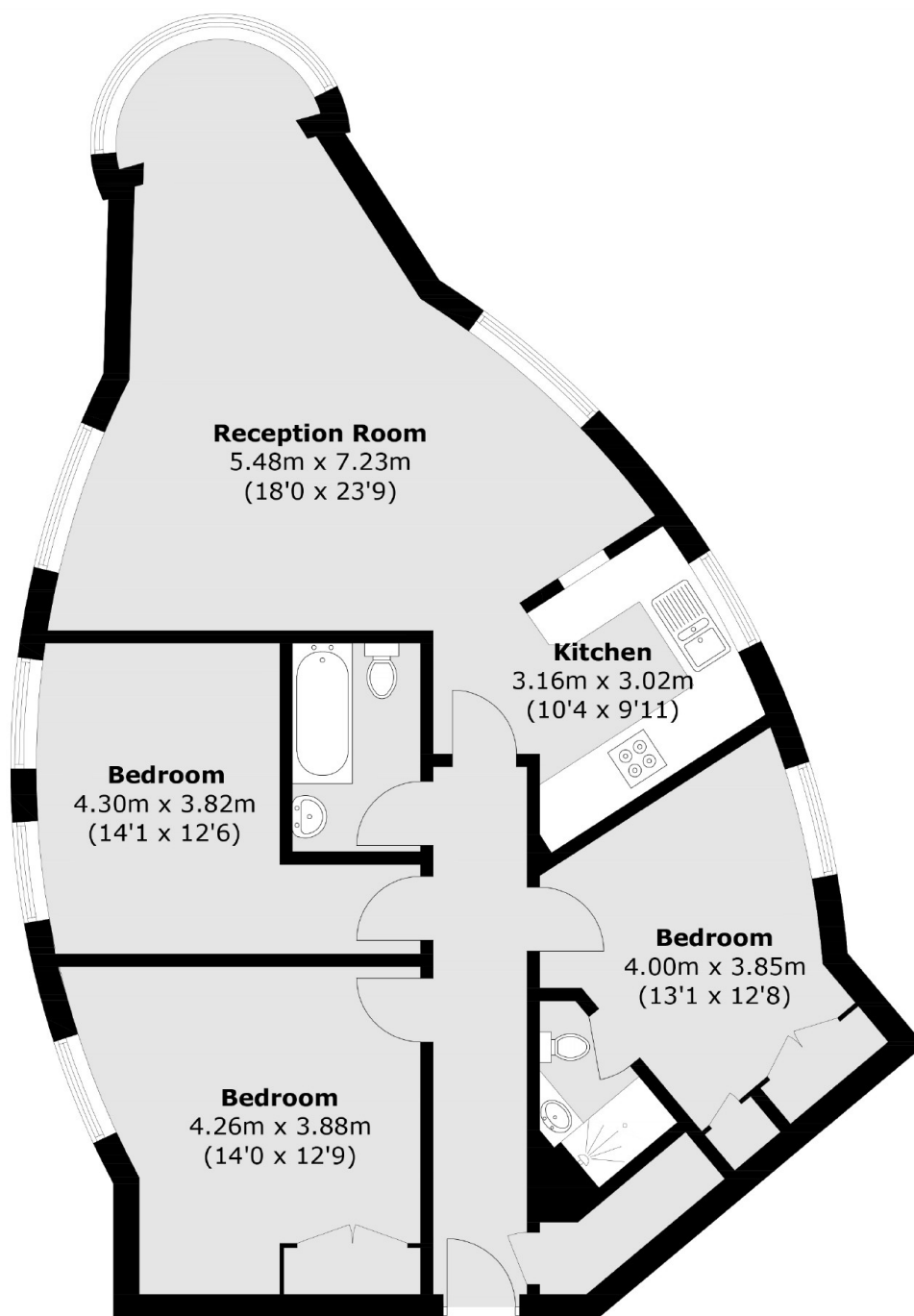
This spacious apartment is situated within a modern purpose-built block on a charming tree lined street. The reception room benefits from three large windows, there are three double bedrooms, two bathrooms and a secure parking space.

Transport links are excellent with St James's Park, Westminster, Victoria and Pimlico all within easy reach. In addition, there are an abundance of shops and restaurants in nearby Victoria Street.

Features

- Three Double Bedrooms
- Secure Parking
- First Floor
- Lift
- Two Bathrooms
- Long Lease

Greycoat Street, London, SW1P



Total area (approx.): 94.9 sq. m (1,021.5 sq. ft)