



St. Georges Square, SW1V

£1,195,000

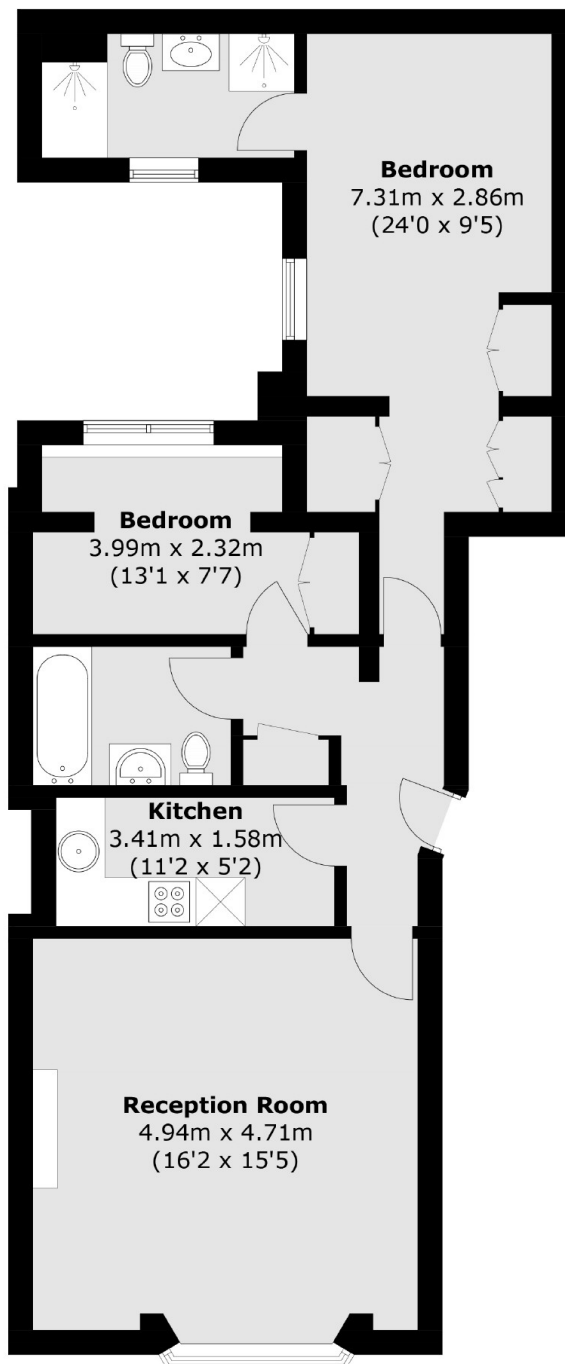
A beautifully presented ground floor two bedroom, two bathroom property situated on the highly sought-after St. George's Square, Pimlico with floor to ceiling windows overlooking the prestigious garden square allowing plenty of natural light.

Conveniently located close to the gardens of St. George's Square and nearby transport links from Pimlico Underground and Victoria Station. In addition, it is within easy reach of the many amenities of Chelsea and Belgravia.

Features

Ground Floor
No Chain
St. Georges Square
Share Of Freehold
Two Bathrooms (one en-suite)
Square Views

St. Georges Square, London, SW1V



Total area (approx.): 73.5 sq. m (791.1 sq. ft)