



Westminster Palace Gardens, SW1P

£1,025,000

Situated on the seventh (top) floor this is a delightful three-bedroom apartment in a prestigious Victorian mansion block just off Victoria street with a day time porter. The facade of the building is Grade II listed.

An excellent location equidistant between Victoria Station and the Houses of Parliament with St James's Park Tube nearby. Just a moment from Victoria St where there are an array of fashionable shops restaurants.

Features

- Daytime Porter
- Facade Grade II Listed
- Seventh Floor
- Lift
- Three Bedrooms
- Share of Freehold



Westminster Palace Gardens, SW1P

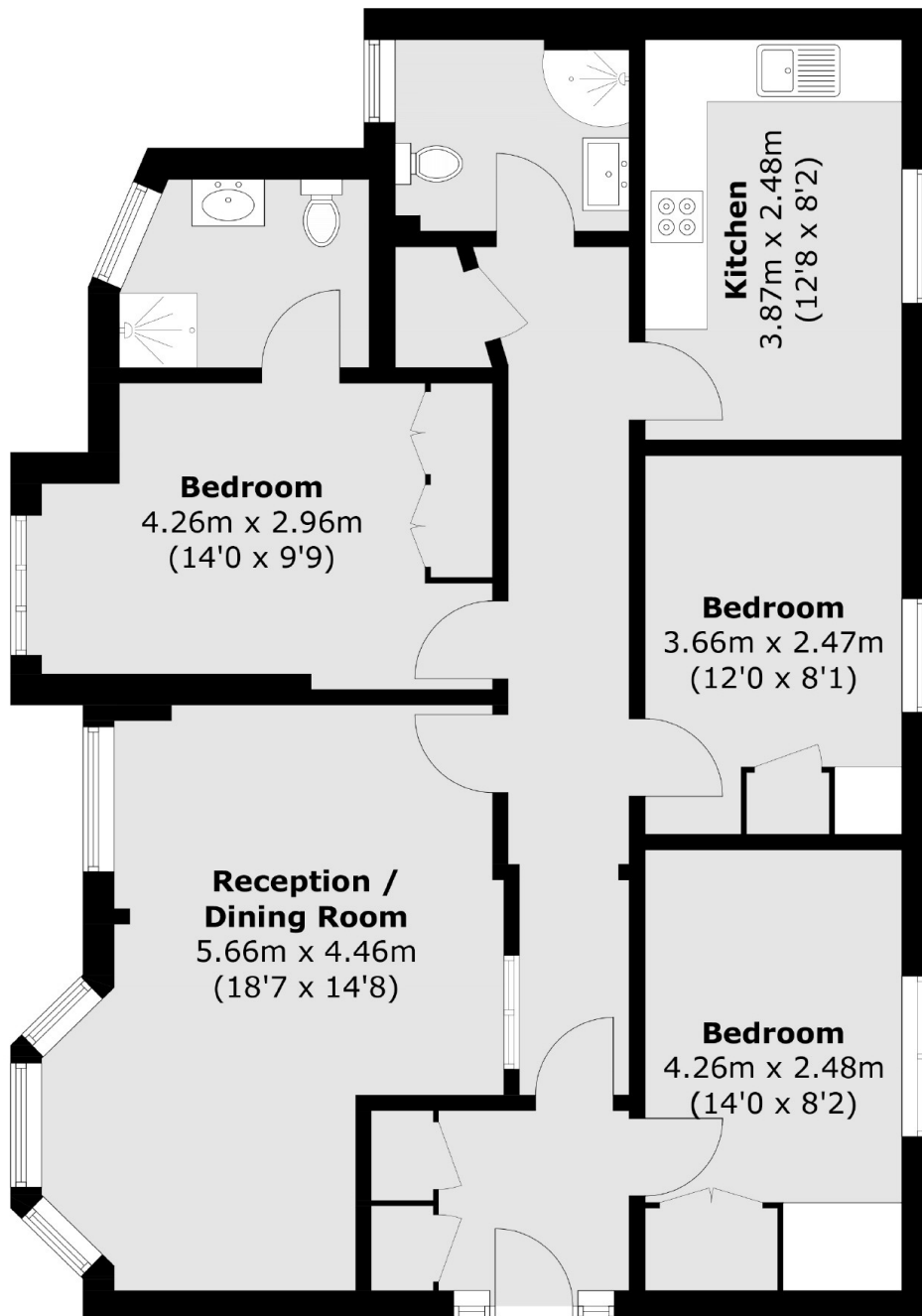
The apartment is situated on the seventh floor with high ceilings and large windows and many wonderful period features, this is a bright and spacious flat. There are three roomy bedrooms, two bathrooms (one ensuite), kitchen with space for a breakfast table and a good size reception room with a bay window and another large window.

The flat has been updated and is nicely presented.

Westminster Palace Gardens is set behind imposing wrought iron gates and has an attractive courtyard with an ornamental fish pond. The porter's office is position on the lower ground floor just off the courtyard.



Westminster Palace Gardens, London, SW1P



Total area (approx.): 90.8 sq. m (977.4 sq. ft)

Dexters

Westminster
50 Churton Street
London
SW1V 2LP
Sales
020 7590 9570

Energy Rating: D. We aim to make our particulars both accurate and reliable. However they are not guaranteed; nor do they form part of an offer or contract. If you require clarification on any points then please contact us, especially if you're traveling some distance to view. Please note that appliances and heating systems have not been tested and therefore no warranties can be given as to their good working order.

 **RICS** | Regulated
Estate Agent
and Letting Agent

[dexters.co.uk](https://www.dexters.co.uk)