



## Westminster Palace Gardens, £1,100,000

Situated on the seventh (top) floor this is a delightful three-bedroom apartment in a prestigious Victorian mansion block just off Victoria street with a day time porter. The facade of the building is Grade II listed.

An excellent location equidistant between Victoria Station and the Houses of Parliament with St James's Park Tube nearby. Just a moment from Victoria St where there are an array of fashionable shops restaurants.

### Features

- Daytime Porter
- Facade Grade II Listed
- Seventh Floor
- Lift
- Three Bedrooms
- Share of Freehold



## Westminster Palace Gardens,

The apartment is situated on the seventh floor with high ceilings and large windows and many wonderful period features, this is a bright and spacious flat. There are three roomy bedrooms, two bathrooms (one ensuite), kitchen with space for a breakfast table and a good size reception room with a bay window and another large window.

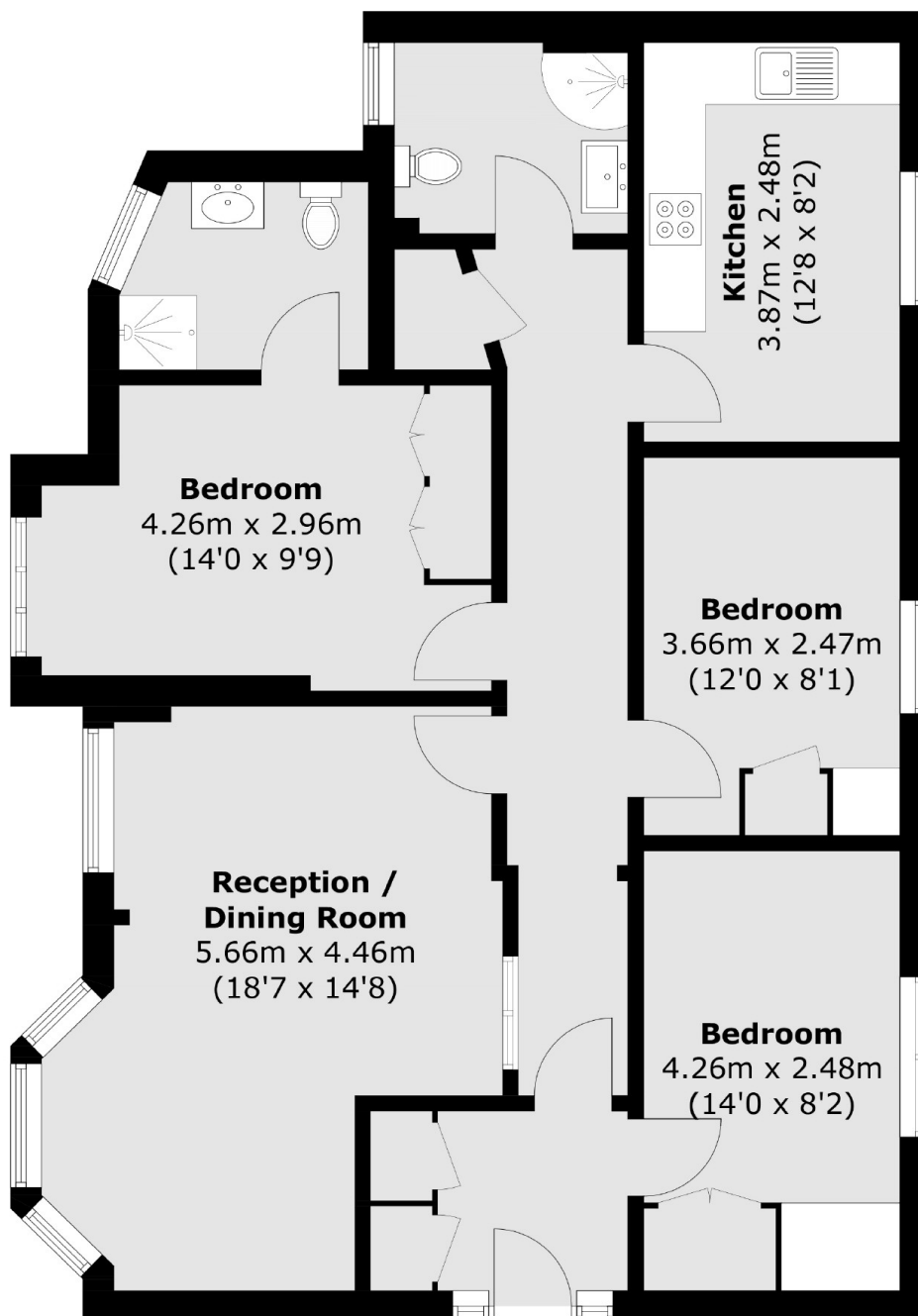
The flat has been updated and is nicely presented.

Westminster Palace Gardens is set behind imposing wrought iron gates and has an attractive courtyard with an ornamental fish pond. The porter's office is position on the lower ground floor just off the courtyard.





# Westminster Palace Gardens, London, SW1P



Total area (approx.): 90.8 sq. m (977.4 sq. ft)