



Sutherland Street, SW1V

£700,000

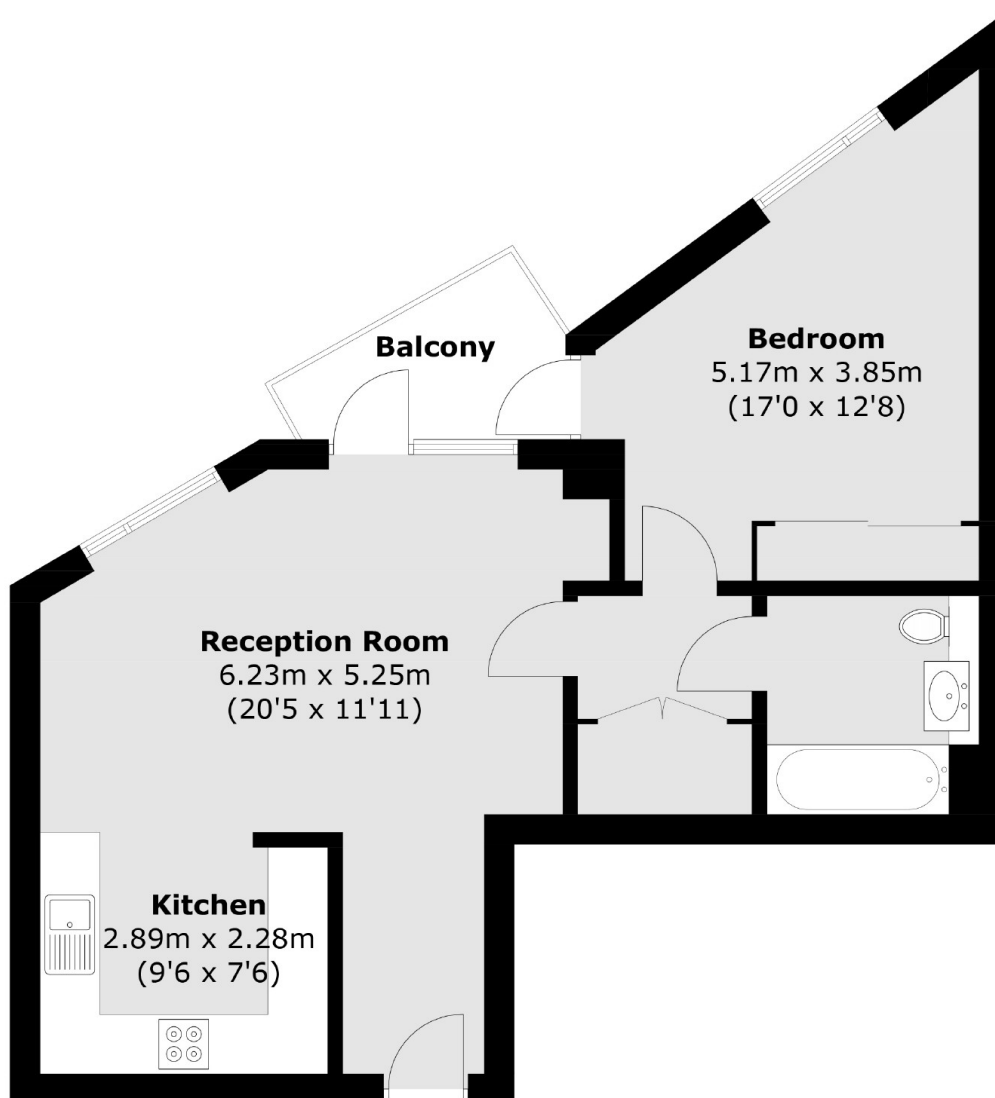
A superb one-bedroom apartment with floor-to-ceiling windows and a private balcony is available on the market with no onward chain. The property is finished to a high standard throughout.

Sutherland Street makes up part of Pimlico's sought-after 'grid' running from Buckingham Palace Road to Lupus Street and is very convenient location for the amenities of Pimlico.

Features

- One Double Bedroom
- Private Balcony
- Concierge
- No Chain
- Fifth Floor
- Modern Kitchen

Sutherland Street, London, SW1V



Total area (approx.): 53.9 sq. m (580.2 sq. ft)
External Area: 3.6 sq. m (38.7 sq. ft)

Dexters

Westminster
50 Churton Street
London
SW1V 2LP
Sales
020 7590 9570

Energy Rating: B. We aim to make our particulars both accurate and reliable. However they are not guaranteed; nor do they form part of an offer or contract. If you require clarification on any points then please contact us, especially if you're traveling some distance to view. Please note that appliances and heating systems have not been tested and therefore no warranties can be given as to their good working order.

 **RICS** | Regulated
Estate Agent
and Letting Agent

[dexters.co.uk](https://www.dexters.co.uk)