

Ambrosden Avenue, SW1P

£550,000

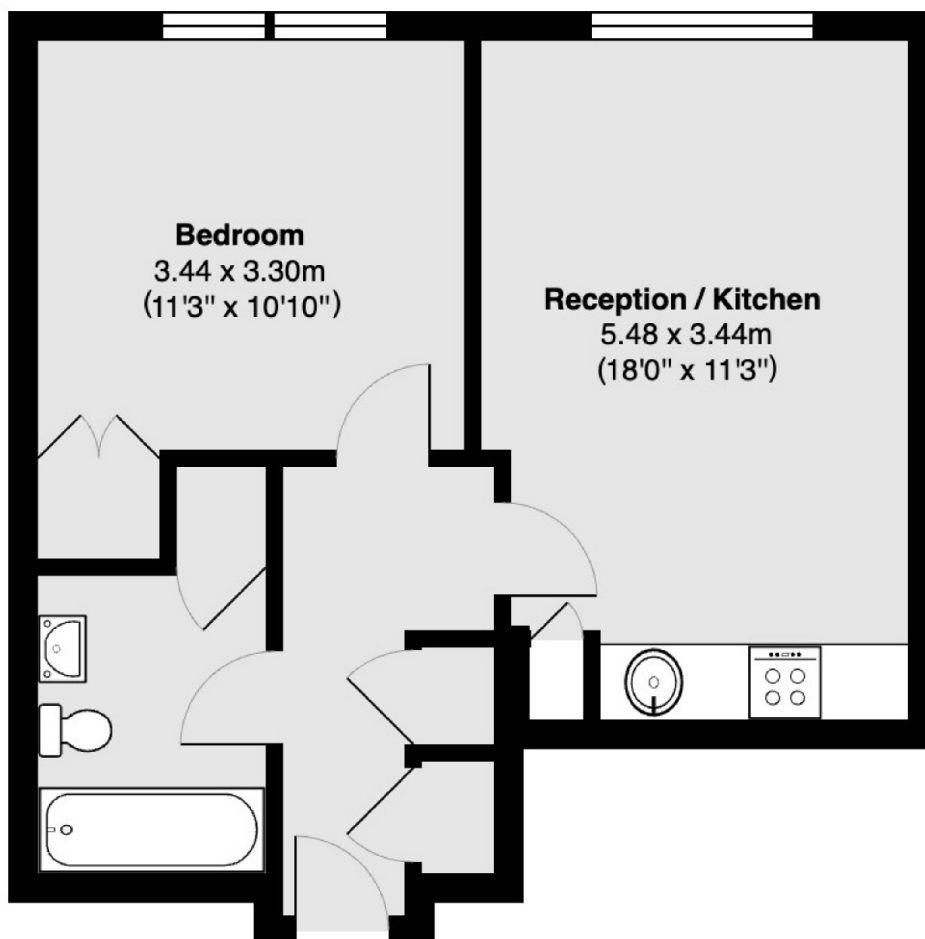
This charming one-bedroom apartment is located in a stylish red brick building in Westminster. It features an open-plan kitchen and living area, a comfortable double bedroom, and a modern family bathroom with lovely high ceilings.

The location is very convenient, as both Victoria underground and mainline Station, as well as St. James's Park underground, are just a five-minute walk away. In addition, there are plenty of amenities located nearby on Victoria Street.

Features

- One Double Bedroom
- Westminster
- No Onward Chain
- Share of Freehold
- Open Plan Living
- 467 SQFT

Ambrosden Avenue, London, SW1P



Total area 43.4 sq m (approx) (467 sq ft approx)