



Marsham Street, SW1P

£1,750,000

Rare to the market this spacious four/five-bedroom duplex apartment in the style of a house set within a 1930s purpose-built block with excellent 24-hour porter service, a wonderful communal roof terrace and ad-hoc parking.

Westminster Gardens is positioned behind The Tate Gallery a few minutes from The River Thames and The Palace of Westminster. Ideally located for transport links from Westminster, St James's Park, Pimlico tube and Victoria transport hub with trains to the south east of England and the Gatwick Express.

Features

- 24-Hour Porters
- Ad-hoc Parking
- Communal Roof Terrace
- Four Bedrooms
- Study/Bedroom
- Share of Freehold



Marsham Street, SW1P

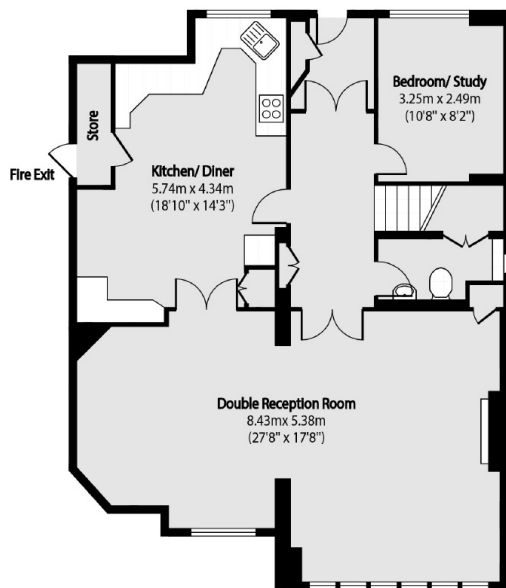
This charming property is positioned on the ground and first floor and enjoys the privacy afforded by its own private street entrance and its own back door. Westminster Gardens is renowned for the high level of security the porters offer.

On entering the property there is a spacious hallway leading to the roomy kitchen/diner with plenty of storage and the back door (fire exit), double doors from the kitchen and hallway lead to an expansive reception room. There is a study or fifth bedroom and a guest cloakroom.

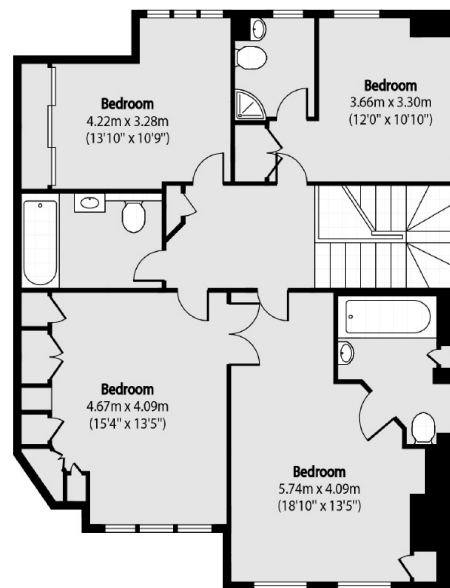
The first floor has four generous size bedrooms with good storage, the main bedroom and second bedroom have an connecting door, there are two ensuite bathrooms and a family bathroom.



Marsham Street, London, SW1P



Ground Floor



First Floor

Total area (approx): 175.30 sq m (1887 sq. ft)