



Cureton Street, SW1P

£700,000

A two-bedroom ground-floor purpose-built apartment that has been updated by the current owners, which boasts a reception room with a feature period fireplace and no onward chain.

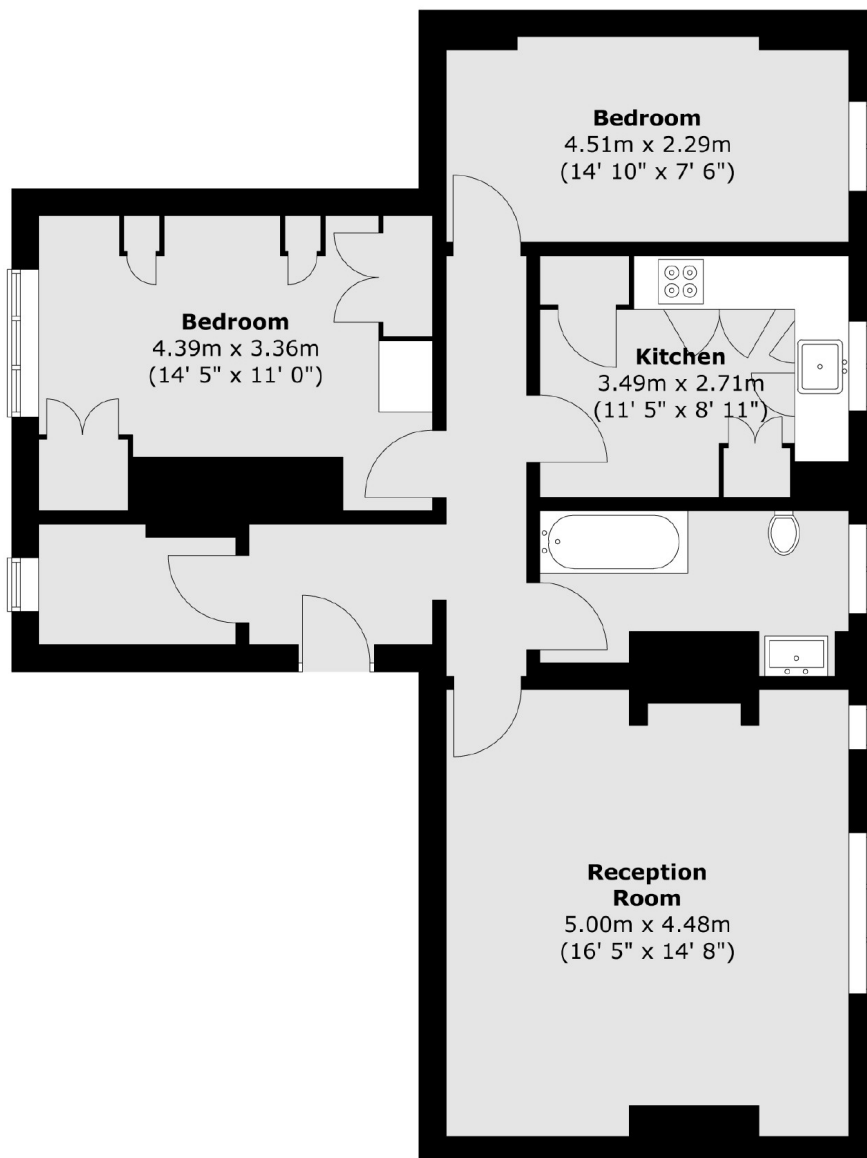
Centrally located, the apartment is near to the Tate Britain gallery and a few minutes walk away from Pimlico and Victoria Stations. Schools, shops, restaurants and other amenities are also within close proximity.

Features

- Two Double Bedrooms
- c. 170 Year Lease
- Additional Study
- Keyfob Access
- Ground Floor
- No Chain

Cureton Street, London, SW1P

Ground Floor



Total area (approx.) : 77.4 sq. m (833 sq. ft)