



Eccleston Square, SW1V

£2,150,000

A beautiful period conversion spanning the top two floors of a stucco fronted house with stunning views of Eccleston Square. The property offers private access to manicured communal gardens, a secluded roof terrace and is available with no chain.

Eccleston Square is one of Pimlico's most desirable addresses, offering access to a stunning residents-only garden square and tennis court. It is conveniently located near local amenities and provides easy access to transportation via Pimlico and Victoria stations, including the Victoria, Circle, and District lines, as well as mainline rail services and the Gatwick Express.

Features

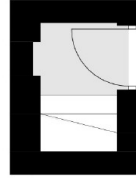
- Two Double Bedrooms
- Two Bathrooms (One En-Suite)
- Guest Cloakroom
- Split Level
- Private Roof Terrace
- Square Access



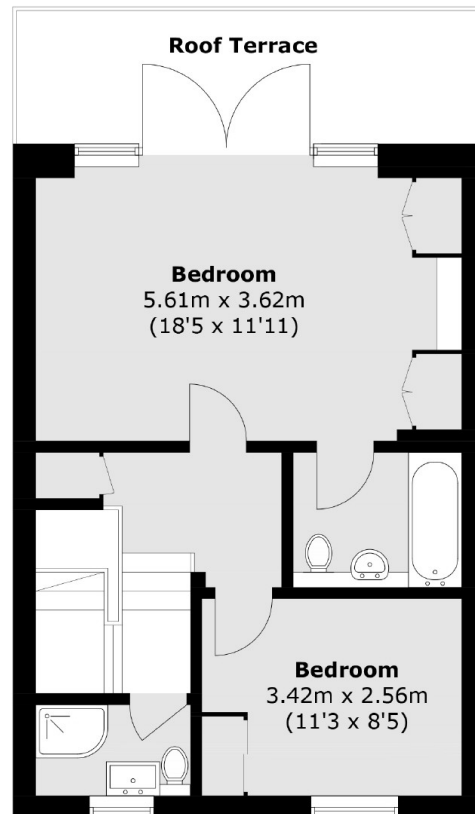
Eccleston Square, SW1V



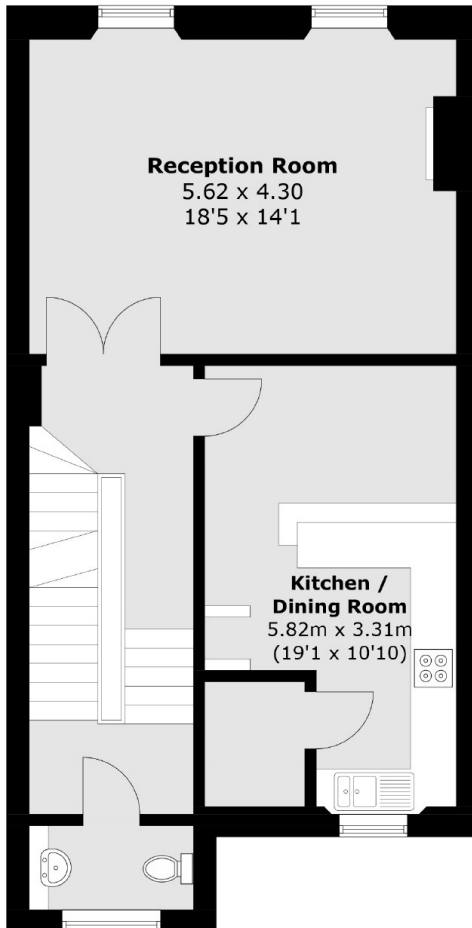
Eccleston Square, London, SW1V



Second Floor



Fourth Floor



Third Floor

Total area (approx.): 109.9 sq. m (1,182.9 sq. ft)
Roof Terrace (approx.): 10.7 sq. m (115.2 sq. ft)